

BOUNDARIES•



BORDERS•NEW FRONTIERS:

GLOBAL PSYCHOANALYSIS in a Social World

DIVISION OF PSYCHOANALYSIS (39)
33RD ANNUAL SPRING MEETING

APRIL 24–28, 2013
BOSTON, MA

2013 DIVISION 39 BOARD OF DIRECTORS

President

Frank L. Summers, Ph.D., ABPP

Past President

William A. MacGillivray, Ph.D., ABPP

Secretary

Dana Castellano, Psy.D.

Treasurer

Arlene (Lu) Steinberg, Psy.D.

APA Council Representatives

Norman Abeles, Ph.D.

Laura Barbanel, Ed.D.

Marilyn Charles, Ph.D., ABPP

David Downing, Psy.D., ABPP

Marsha McCary, Ph.D.

Richard Ruth, Ph.D.

Members-at-Large

Ankhesenamun Ball, Psy.D.

Jill Bellinson, Ph.D.

Mary Beth Cresci, Ph.D., ABPP

Jaine L. Darwin, Psy.D., ABPP

Dennis Debiak, Psy.D.

Diana Diamond, Ph.D.

Nancy McWilliams, Ph.D., ABPP

Ernesto Mujica, Ph.D.

Henry Seiden, Ph.D.

Section Representatives

Section 1: William K. Fried, Ph.D.

Section II: JoAnn Ponder, Ph.D.

Section III: Devon King, Ph.D.

Section IV: Joseph Schaller, Psy.D.

Section V: Barry Dauphin, Ph.D.

Section VIII: Maurine Kelly, Ph.D.

Section IX: Elizabeth Goren, Ph.D.

Parliamentarian

Laurel Bass Wagner, Ph.D.

Division 39 Office

Ruth Helein—Executive Admin

2615 Amesbury Road

Winston Salem, NC 27103

(336) 768-1113 (o)

(877) 212-0511 (toll free)

(336) 768-4445 (f)

(336) 464-2974 (fax)

(336) 409-4553 (Ruth's cell)

div39@namgmt.com

div39office@gmail.com

ruth@namgmt.com

Website

www.division39.org

Conference Coordinators

Natalie Shear Associates

1101 14th Street NW, Suite 1200

Washington, DC 20005

(800) 833-1354 x1 (toll free)

(202) 833-4456 x1 (o)

(202) 446-2965 (fax)

Division39Boston@natalieshear.com

natalie@natalieshear.com

www.natalieshear.com

2013 SPRING MEETING

Co-Chairs

Jaine L. Darwin, Psy.D., ABPP
Patricia Harney, Ph.D.
Usha Tummala-Narra, Ph.D.

Steering Committee

Umi Chong, Psy.D.
Miriam R. Frankel, Ph.D.
Johanna Malone, Ph.D.
Kate Roy Sullivan, Ph.D.

Proposal Reviewers

Daphny Ainslie, Ph.D.
Lucinda Ballantyne, L.I.C.S.W.
Andrea Barnes, Ph.D.
Elizabeth Baumann, Ph.D.
Jill Bellinson, Ph.D.
Douglas Bernon, Ph.D.
Brian Brown, M.A.
Dana Castellano, Psy.D.
Marilyn Charles, Ph.D., ABPP
Elisa Cheng, M.D.
Leilani Crane, Ph.D.
Mary Beth Cresci, Ph.D, ABPP
Dennis Debiak, Ph.D.
Douglas Deville, Psy.D.
Karen Dias, Ph.D.
Deborah Dowd, L.I.C.S.W.
Jennifer Durham-Fowler, Ph.D.
Ted Ellenhorn, Ph.D.
Collin Ennis, Psy.D.
Jack Foehl, Ph.D.
Jill Forney, L.I.C.S.W.
Jeb Fowler, Ph.D.
Luanne Grossman, Psy.D.
Tanya Hess, Ph.D.

David Kemmerer, Ph.D.
Heather-Ayn Indelicato, Psy.D.
Shamaila Khan, Ph.D.
Elaine Lang, Ph.D.
Peter Lawner, Ph.D.
Linda Luz-Alterman, Ph.D.
Bill MacGillivray, Ph.D., ABPP
Johanna Malone, Ph.D.
Mia Medina, Psy.D.
Uma Millner, Ph.D.
Marilyn Metzl, Ph.D., ABPP
Neha Patel, Ph.D.
Barbara A. Pizer, Ed.D., ABPP
Stuart Pizer, Ph.D., ABPP
Scott Pytluk, Ph.D.
Michael Reison, Ph.D.
Sharon Roberts, Ph.D.
David Rupert, Ph.D.
George Stavros, Ph.D.
Arlene (Lu) Steinberg, Psy.D.
Kris Yi, Ph.D.
Laurie Wagner, Ph.D.
Muriel Weckstein, M.A.

TABLE OF CONTENTS

Spring Meeting Committee and Proposal Reviewers	1
Welcome	3
General Conference Information	5
Registration Hours	7
Book Exhibitor Hours	7
Continuing Education Credits	8
CE Master Classes	10
Opening Event	14
Division 39 Events and Meetings	15
Keynote: Drew Westen, Ph.D.	16
Keynote: Riccardo Lombardi, M.D.	16
Division 39 Section Events	17
Section I	17
Section II	17
Section III	18
Section IV	18
Section V	19
Section VI	19
Section VIII	19
Section IX	20
Division 39 Committee Events	21
Steering Committee Invited Panels	27
Conference Program	
Wednesday, April 24	29
Thursday, April 25	31
Friday, April 26	43
Saturday, April 27	55
Sunday, April 28	65
Index of Presenters	69
Hotel Floor Plans	85-86
Registration Form	87-88

WELCOME

Dear Conference Participants,

We warmly welcome you to Boston and to the 32nd Annual Spring Meeting of Division 39. As we learned in the 2012 national and local elections, we are a country with a changing demographic marked by growing diversity and divergent thinking. A meeting in the capital of the first state to legalize same-sex marriage is a fitting place to invite us to look within our psychoanalytic domain and ask how are we responding to our changing world. As a profession that privileges the inner life of the individual, how do we also attend to the outer world in which the individual lives, loves and works? As our theme asks, what are the borders, boundaries and new frontiers for global psychoanalysis in a social world?

When we chose our theme, our Steering Committee envisioned a meeting with dual focuses on inner and outer: the important exploration of the intrapsychic along with the impact of the social, the economic, the spiritual and the political on the individual, and what psychoanalytic thinking has to offer to the political, the social, the arts and the sciences. Our keynote speakers come as major contributors to this world of inner and outer. On Friday, Dr. Drew Westen, who has careers as a researcher, teacher and political consultant, will present his talk, "Conflict and Compromise In Washington: The Psychopathology of Everyday Legislation." On Saturday, Dr. Riccardo Lombardi, known in his native Italy and internationally as a major theoretician and clinician, will present his talk, "Working at the Frontiers of Nothingness: The Struggle to Develop Subjectivity." With our invited panels, we hope to offer all attendees multiple opportunities to appreciate the scope of psychoanalytic arenas from the consulting room to the world stage. We hope you will join us as we explore issues of race, ethnicity, religion, social class, sexual orientation, political tumult, as well as spirited dialogues among analysts from all schools of psychoanalytic thought about what we think and practice in our consulting rooms. Judging by the quality and quantity of excellent submissions for the meeting, members of the Division are eager to join us in this endeavor.

We hope you will take time to appreciate the riches of Boston, Do visit a museum or two or three. Walk in the public gardens around the corner from the hotel, amble along the Freedom Trail, venture to the "Peoples Republic of Cambridge" and see Harvard University or the Frank Gehry building at MIT. Take in a Red Sox game, with those wearing Yankee paraphernalia proceeding at their own

risk. Dine on seafood, ethnic food including Chinese, Ethiopian, Italian, Middle Eastern, Thai and Tibetan.

On behalf of our stellar Steering Committee, and ourselves we hope this time in Boston serves to revolutionize your thinking and to incite you to become an agent of change within our profession and within our world.

Co-Chairs, Boston Spring Meeting



Jaine Darwin
Psy.D., ABPP



Patricia Harney
Ph.D.



Usha Tummala-Narra
Ph.D.

GENERAL CONFERENCE INFORMATION

Boston Park Plaza Hotel & Towers

Located near Boston's Back Bay, this historic property in one of the most historic cities, offers perfect meeting space for conferences with an elegant style and numerous amenities, including restaurants and lounges inside the hotel. A few blocks away are shops, more restaurants and, the nation's first public parks, Boston Common and the Public Garden, and a short 3 miles from Logan International Airport. Come early, stay late and enjoy what Boston has to offer.

Division 39 attendees can book their rooms at the special rate of \$225, single/double, plus tax. Tower rooms are available at \$285, plus tax. For reservations, please call 1-800-225-2008 and ask for the special group rate for Division 39. You may also access the Hotel's reservations online at <https://bostonparkplaza.reztrip.com>. Access Code: APA

All reservations must be made on or before **March, 25, 2013**, before 5pm local Boston time. Reservations made after this date will be accepted at Hotel's prevailing rate, based on availability.

Registration

Please use the registration form in this brochure or register online at the Division 39 website, www.division39.org. If you are using a credit card, you may fax your registration to 202-446-2965. If you are paying by check, please mail the check with your registration form. Please **DO NOT** mail the check without the form. **WE DO NOT ACCEPT PHONE REGISTRATIONS.**

ALL CONFERENCE PARTICIPANTS, INCLUDING PRESENTERS, MUST REGISTER AND PAY THE FEE. THERE ARE NO EXCEPTIONS. THERE ARE NO PARTIAL OR DAY RATE REGISTRATIONS.

Confirmations are emailed to each individual registrant. All questions regarding registration are to be directed to Natalie Shear Associates at 1-800-833-1354 x4 or by email to Division39Boston@natalieshear.com. There is a \$15 processing fee for credit cards and checks that are rejected, and, a \$50 on site registration fee that is applied to everyone who has not registered in advance.

For Graduate Students

All students **MUST** submit proof of their current full-time (student) status **WITH** registration. Without this proof, the registration will not be processed. "Proof" is an official document that has the school logo and/or letterhead that specifically states that you are enrolled full-time for the current semester or provides information (i.e., a paid bill or transcript, a letter from the registrar, etc.) that supports that enrollment. A student ID is **NOT** "proof."

For Institute Candidates

Candidates in analytic institutes who wish to register at the special fee **must include with their registration form** a letter from an administrator at their institute stipulating that you are a candidate in good standing in the first five years of your training.

If you are mailing or faxing your registration form, please submit such "proof" with that form. If you are submitting your registration form online, please submit the letter by fax to 202 446-2965 or by email attachment to Hank@natalieshear.com.

Early Career Professionals (ECP)

The Division offers a special registration fee to those who have received their advanced degree in April 2006 or later. Fees are listed on the Registration Form in the back of this brochure.

All registrations postmarked after **April 16, 2013** will be returned. **DO NOT MAIL OR FAX REGISTRATIONS AFTER APRIL 16.** Registration after April 16 is only available on site at the conference hotel.

Refund Policy

Refund requests must be received in writing prior to April 1, 2013. Fees will be refunded less a \$75 processing fee. There will be no refunds made after April 1. Please email your refund request to Division39Boston@natalieshear.com or fax to 202 446-2965.

Accessible Accommodations

Assistive Listening Devices, sign language interpreters and materials in alternate formats will be provided upon request for conference sessions. Please indicate your request on the registration form.

Foreign Affiliates

Foreign Affiliates who are current Division 39 members or non members can register at special rates. Please check the Registration Form in the back of this Program or online at www.division39.org.

On-Site Registration

Anyone who has not registered prior to April 16, may do so on-site at the conference. There is an additional fee of \$50 for all on-site registrations. There are no exceptions. All registration will take place on the Mezzanine Level in the Dartmouth/Exeter Foyer. Please pick up your credentials and Continuing Education materials before attending any sessions. You will need these materials for Continuing Education credits.

Wednesday Master Classes and Conference Registration Hours:

Wednesday, April 24	8:00 am–5:00 pm
Thursday, April 25	7:00 am–5:00 pm
Friday, April 26	7:00 am–6:00 pm
Saturday, April 27	7:00 am–5:00 pm
Sunday, April 28	7:00 am–10:00 am

Book Exhibitors

Exhibitors at press time include Association Book Exhibit, Austen Riggs Center, Routledge/Psychology Press, and Taylor and Francis. Exhibitors will be located on the Mezzanine Level of the Hotel.

Please note the hours below:

Wednesday, April 24	Set up
Thursday, April 25	9:00 am–5:00 pm
Friday, April 26	8:00 am–6:00 pm
Saturday, April 27	9:00 am–6:00 pm
Sunday, April 28	8:00 am–Noon

CONTINUING EDUCATION CREDITS

The Division of Psychoanalysis is approved by the American Psychological Association to sponsor continuing education for psychologists. Division 39 maintains responsibility for these programs and their content.

Master Classes and Spring Meeting programs are open to all mental health professionals, and participants may receive continuing education credit for attending one or more of these programs. Wednesday Master Classes require registration separate from general registration for the Spring Meeting and are offered for additional fees. Participants from professions other than psychology should consult with their respective licensing boards regarding the acceptance of American Psychological Association-approved Certificates of Attendance as documentation of continuing education.

Complete descriptions of each Wednesday Master Class and other CE-eligible programs (title, presenter(s), learning objectives, instructional level) can be found on the Division 39 website: www.division39.org. The website will be the most complete source of information about CE-eligible programs, and participants are encouraged to check this site regularly for updates and/or additional information when making decisions about attending the Wednesday Master Classes and/or Spring Meeting programs offered from Thursday to Sunday.

For all CE-eligible programs, there is no partial credit for attending only a portion of an eligible program. To receive a Certificate of Attendance for any CE-eligible program, it is necessary to register for the Spring Meeting, have your badge scanned at the start of the program, attend the entire presentation, have your badge scanned at the conclusion of the program and return a completed evaluation form along with your log to the conference registration desk before you leave the conference. Instructions about any additional procedures will be posted on the Division 39 website (www.division39.org) and will be available at the Conference Registration Desk.

Each CE-eligible program is identified by a letter/number code (i.e., TH-1, FR-3, SA-5, SU-2) indicating the day of the presentation and its order in that day's schedule. This code will match the program's listing on the Continuing Education

(CE) Log, which is each participant's official record of attendance at CE-eligible programs. Fifty-minute programs are not available for continuing education credits; other presentations that are not available for continuing education credits are identified as such. If interested in earning continuing education credits for attending programs during the Spring Meeting, please request a Continuing Education Log at the Registration Desk.

Division 39 is committed to accessibility and non-discrimination in its continuing education activities and will conduct these in conformity with the American Psychological Association's Ethical Principles for Psychologists. There is no commercial support for any of the Wednesday Master Classes or Spring Meeting continuing education programs. All presenters have denied the existence of any relationships (i.e., based on program content, research, grants or other funding/support) that could be construed as conflicts of interest. Presenters of CE-eligible programs will address, whether during the program or via a list of references, the utility of the presentation content and the basis for their statement about this utility as well as the limitations and risks (common and most severe) associated with the program content. Presenters and participants are asked to honor the need for privacy and confidentiality throughout these programs. If program content becomes emotionally distressing, participants are encouraged to process these feelings during discussion periods. If participants have special needs, we will make reasonable attempts to accommodate them. Please contact Natalie Shear (natalie@natalieshear.com) with requests for accommodation. **Please contact Dr. Colin Ennis (chair of the Division 39's Continuing Education Committee) at div39ce@gmail.com or at the Registration Desk during the meeting itself for additional information about presenters, with questions and/or problems.**

WEDNESDAY MASTER CLASSES APRIL 24, 2013

ADVANCE REGISTRATION REQUIRED

Workshops are open to all mental health professionals. Participants will receive continuing education credit for these events. The Division of Psychoanalysis is approved by the American Psychological Association to offer continuing education for psychologists. Division 39 maintains responsibility for the program. Upon completing an evaluation form, participants will receive certificates of attendance for each class completed. Participants may register for one or more CE master classes, independent of registering for the Spring Meeting itself. This information is also available on the Division 39 website, www.division39.org. A full description of every master class along with learning objectives and biographical information on the presenters can also be found on the Division website. **Please indicate on the registration form which sessions you will attend.**

An Introduction to the Application of Mentalization Based Therapy to Our Work with Children, Adolescents and Their Families

Norka Malberg, Psy.D., LPC

Child and Adolescent Psychoanalyst, Clinical Faculty, Yale Child Study Center and Private Practice, New Haven, CT

9:00 am–1 pm; 2:00 pm–6 pm

7 CE Credits, Fee: \$140.00

This is an introductory workshop to the theoretical basis of Mentalization Based Treatments (MBT) and the clinical applications to the work with children, adolescents and families. The course will begin with a review of the evolution of the MBT ideas as they emerged in the context of the developmental psychoanalytic tradition influenced by the work of clinicians at the Anna Freud Centre in London, namely, Dr. Peter Fonagy and colleagues. Some of the basic MBT techniques will be reviewed and illustrated through the use of videos and role plays. Specific clinical applications to different populations will be described and explored through the use of clinical vignettes. Participants will be welcome to bring case material they would like to explore with the group using the MBT lens. Issues of adherence to the model and how it has proven to be a useful tool to engage hard to reach populations will be discussed. Some basic knowledge regarding attachment theory is recommended but not required.

Understanding and Treating Complex PTSD

Judith Lewis Herman, M.D.

Clinical Professor in Psychiatry, Harvard Medical School, Director of Training, Victims of Violence Program, Cambridge Health Alliance

9:00 am–12:15 pm

3 CE Credits, Fee: \$60.00

Complex PTSD is a function of prolonged and repeated exposure to traumatic experiences that befalls the chronically disempowered. The personality structure of the victim is eroded and the sense of self may be annihilated. The people present with clinical symptoms that are easily confused with other diagnoses, particularly personality disorders. This workshop will address the causes of complex PTSD and will introduce a treatment model that conceptualizes stages of recovery and the clinical focus for each stage. This approach will include individual and group interventions that help people move from being victims to being survivors.

Success in Publishing Workshop

Elliot Jurist, Ph.D., Ph.D.

Director, Doctoral Program in Clinical Psychology, CUNY and Professor, Department of Psychology, CUNY, and Editor of Psychoanalytic Psychology

9:00 am–12:15 pm

3 CE Credits, Fee: \$60.00

This workshop is designed to help Division members to develop themselves as authors. The workshop begins with a focus on how to formulate a writing project, specifically how to situate it in relation to other, related contributions and how to emphasize its originality. We will distinguish different kinds of writing—research (both qualitative and quantitative), theoretical, and case descriptions. We will discuss the various components of each of these kinds of writing. We will give some consideration to how to select appropriate journals for your work. We will then discuss the process of how manuscripts are reviewed and how to use the reviewing process to improve your writing. Throughout the workshop, we will solicit ideas and aim to cultivate them in the direction of becoming viable projects. Thus, the workshop has a primary, practical aim for prospective authors.

A Therapist's Guide to New Media

Kristi Pikiewicz, Ph.D.

Editor, Division 39 monthly publication, InSight, Managing Editor Division 39 DIVISION/ Review, and Editor, Division 39 blog "Meaningful You" at Psychologytoday.com

1:00 pm–2:30 pm

1.5 CE Credits, Fee: \$30.00

Blogging, Tweeting, Facebooking—a decade ago these verbs didn't exist and therapists were dependent on offline social networks for referrals. Now, it's a brave new world, filled with brave new ways to reach clients, network with other therapists, and promote your expertise. This workshop offers practical, hands-on strategies for promoting your practice in the 21st century, including free steps you can take today to implement and interconnect a webpage, blog, and social media—the basic building blocks of respectable online presence. This workshop assumes basic computer literacy of word processing and web surfing (email, Google, etc), but requires no prior experience with webpages or any esoteric computer skills beyond the English language.

Transference-Focused Psychotherapy for Narcissistic Personality Disorder: Recent Developments in Treatment and Research

Diana Diamond, Ph.D.

Professor, Doctoral Program in Clinical Psychology, CUNY, Adjunct Assistant Professor of Psychiatry, Weill Medical Center of Cornell University

2:00 pm–5:15 pm

3 CE Credits, Fee: \$60.00

Individuals with narcissistic psychopathology have long been recognized as posing formidable challenges to their clinicians. For the past 20 years, a group of psychoanalytic clinicians and clinical researchers at the Personality Disorders Institute (PDI) at Weill Medical Center of Cornell University have been working to develop a psychoanalytically-oriented psychotherapy based on object relations theory for individuals with a range of personality disorders at different levels of severity, including narcissistic disorders. This workshop will present specific techniques to more effectively treat patients with a spectrum of narcissistic disorders from low to high functioning. Case material will be presented to illustrate how our understanding of attachment substrate of severe narcissistic disorders helps us understand the fluctuations in narcissistic resistances and transferences that make these patients so challenging to treat. The presentation of case material from workshop participants will also be encouraged.

3:00 pm–6:15 pm

3 CE Credits, Fee: \$60.00

Workshop Free to Early Career Psychologists and Graduate Students who are Members of Division 39

The Business of Being a Psychodynamic Psychologist in the 21st Century: Building and Marketing Your Practice

All Faculty are practicing psychologists in private practice in addition to listed affiliations:

Dana L. Castellano, Psy.D., Acting Training Director, Boulder Institute for Psychotherapy and Research. **Robert (Bart) Magee, Ph.D.**, Executive Director, San Francisco Access Institute for Psychological Services. **Steven D. Axelrod, Ph.D.**, Principle, Boswell Group in psychoanalytic management and consultation. **Brenda Lovegrove Lepisto, Psy.D.**, Core Faculty, Michigan State University/ Hurley Medical Center. **Devon King, Ph.D.**, Assistant Professor, George Washington University, Professional Psychology Program. **Jonathan Eger, Psy.D.**, Candidate, NYU Postdoctoral Program. **Marilyn Charles, Ph.D.**, Staff Clinical Psychologist, Austen Riggs Center.

This introductory presentation is designed to be applicable to clinicians at all stages of their career, with a particular emphasis on graduate students, early career professionals and analytic candidates. The goal is to introduce the basic tenets and guidelines for entering private practice while holding on to a psychoanalytic sensibility in both clinical orientation and also conceptualizing one's professional identity. To that end, we aim to not only address the nuts and bolts of embarking upon independent practice, but also to consider how one's identity can encompass both viewing oneself as a member of the helping profession to conceiving of oneself as an entrepreneur or small business owner.

OPENING EVENT



Politics and Psychoanalysis **A Conversation with Drew Westen, Ph.D.**

Drew Westen, author of *The Political Brain: The Role of Emotion in Deciding the Fate of the Nation*, Founder of Westen Strategies, LLC, a strategic messaging consulting firm, and Professor, Psychology and Psychiatry, Emory University, will don all three of his hats to regale and enlighten us in a conversation with the audience about how all things political can be influenced by all things psychoanalytic. We look forward to a glimpse into a rarely viewed slice of applied psychoanalysis.

WEDNESDAY APRIL 24, 2013
8:00–9:30 PM

Boston Park Plaza Hotel, Georgian Room

Free for conference registrants.
\$20 for non-registrants

DIVISION 39 EVENTS AND MEETINGS

THURSDAY, APRIL 25

Board of Directors Meeting

9:00 am–4:00 pm

Room: Imperial Ballroom

Scientific Award

4:00–4:50 pm

Room: Georgian

Award Recipient: **Paul Wachtel, Ph.D.**

Paper: Psychoanalysis and the Moebius Strip: Where Depth Meets Context

President's Address and Award Ceremony

5:00–6:20 pm

Room: Plaza Ballroom

Welcome: Boston Steering Committee

Awards Chair: **Mary-Joan Gerson, Ph.D.**

Award Presentations:

Leadership Award: **Marilyn Charles, Ph.D., ABPP**

Founders Award In Memoriam: **Norbert Freedman, Ph.D. 1922-2011**

Chair: **William MacGillivray, Ph.D., ABPP**

President's Address

Frank L. Summers, Ph.D., ABPP

Psychoanalysis in the Age of Nikeism

Welcome Reception

Featuring live Jazz music by The Richard Hale Shaw Band

6:30–8:00 pm

Room: Imperial Ballroom

FRIDAY, APRIL 26

Keynote Address

3:30–5:00 pm

Room: Imperial Ballroom

Chair: **Patricia Harney, Ph.D.**

Drew Westen, Ph.D.

Conflict and Compromise in Washington: The Psychopathology of Everyday Legislation

SATURDAY, APRIL 27

Keynote Address

10:00–11:30 am

Room: Imperial Ballroom

Chair: **Usha Tummala-Nara, Ph.D.**

Riccardo Lombardi, M.D.

Working at the Frontiers of Nothingness: The Struggle to Develop Subjectivity

Informal Conversation with President Frank L. Summers, Ph.D., ABPP

5:00–6:00 pm

Room: Presidential Suite

DIVISION 39 SECTION EVENTS

Section I: Psychologist Psychoanalyst Practitioners

Invited Panel

Psychoanalysis: Making It Better for You

Friday, April 26, 10:00–11:50 am

Room: Clarendon Room

Board Meeting

Saturday, April 27, 4:00–4:45 pm

Room: Hancock

Reception

Friday, April 26, 6:00–8:00 pm

Room: Berkeley

Section II: Childhood and Adolescence

Invited Panel

How Attachment Theory and Research Informs Our Work with Hard-to-Reach Parents and Their Young Children

Thursday, April 25, 1:00–2:50 pm

Room: Plaza Ballroom

Board Meeting

Saturday, April 27, Noon–2:00 pm

Room: Cambridge

Reception and Award Presentations

Co-sponsored with Sections III and IX, Committee on Multicultural Concerns and Committee on Sexualities and Gender Identities

Saturday, April 27, 6:30–8:30 pm

Room: Georgian

Section III: Women, Gender and Psychoanalysis

Invited Panel

Global and Intrapsychic Aspects of the Nanny Experience
Sunday, April 28, 8:00–9:50 am
Room: Statler

Discussion Hour Co-sponsored with Committee on Multicultural Concerns

“Partnering and Intimacy: Do Diversity and Difference Matter?”
Saturday, April 27, 2:00–2:50 pm
Room: Clarendon

Board Meeting

Friday, April 26, 5:00–6:30 pm
Room: Fairfield

Reception and Award Presentations

Co-sponsored with Sections II and IX, Committee on Multicultural Concerns and
Committee on Sexualities and Gender Identities
Saturday, April 27, 6:30–8:30 pm
Room: Georgian

Section IV: Local Chapters

Invited Panel

Intergenerational Transmission of WW2: The Impact of Our Parents’ Stories
Friday, April 26, 10:00–11:50 am
Room: Arlington

Senate Meeting

Friday, April 26, 7:00–9:00 am
Room: Beacon Hill

Open Meeting

Saturday, April 27, 8:00–10:00 am
Room: Hancock

Section V: Applied Clinical Psychoanalysis

Invited Panel

Applied Clinical Psychoanalysis: A Roundtable Discussion
Thursday, April 25, 8:00–9:50 am
Room: Plaza Ballroom

Board Meeting

Saturday, April 27, Noon–2:00 pm
Room: Off-site

Reception

Saturday, April 27, 6:00–8:00 pm
Room: Berkeley

Section VI: Psychoanalytic Research Society

Invited Panel

Answering Important Clinical Questions Through Research with New Methods
Sunday, April 28, 8:00–9:50 am
Room: Hancock

Scientific Poster Session

Thursday, April 25, 6:30–8:00 pm
Room: Imperial Ballroom

Section VIII: Couple and Family Therapy and Psychoanalysis

Invited Panel

In/Out, Up//Down, Near/Far: Crucial Dimensions in Couple and Family Therapy
Friday, April 26, 8:00–9:50 am
Room: Plaza Ballroom

Board Meeting

Sunday, April 28, 10:00 am–Noon
Room: Cambridge

Conversation Hour/Reception

Co-sponsored with Committee on Multicultural Concerns
Friday, April 26, 5:00–7:00 pm
Room: Arlington

Section IX: Social Responsibility

Invited Panel

Social Justice and Psychoanalytic Ethics Roundtable Discussion
Saturday, April 27, 1:00–2:50 pm
Room: Arlington

Board Meeting

Saturday, April 27, 3:00–5:00 pm
Room: Cambridge

Reception and Award Presentations

Co-sponsored with Sections II and III, Committee on Multicultural Concerns and
Committee on Sexualities and Gender Identities
Saturday, April 27, 6:30–8:30 pm
Room: Georgian

DIVISION 39 COMMITTEE EVENTS

American Board of Professional Psychology (ABPP)

Board Meeting

Saturday, April 27, 8:00 am–Noon
Room: Stuart

Awards Committee

Friday, April 26, Noon–1:00 pm
Room: Berkeley

Candidate Outreach Committee

Invited Panel

Where We Come From and Where We are Going: Reflections on Formative
Experiences From Family, Jazz, and Politics
Thursday, April 25, 8:00–9:50 am
Room: Berkeley

Board Meeting

Friday, April 26, Noon–1:00 pm
Room: Beacon Hill

Reception

Friday, April 26, 5:00–6:00 pm
Room: White Hill

President's Reception for Candidates, Graduate Students and Early Career Psychologists

Friday, April 26, 6:00–8:00 pm
Room: Georgian

Committee on Education and Training

Invited Panel

Navigating Psychoanalytical Orientation As Minority Status: Administration, Academic, Researcher, Early Career Psychologist, Intern & Graduate Student
Friday, April 26, 8:00–9:50 am
Room: Berkeley

Joint Conversation Hour Co-sponsored with Early Career Psychologists Committee

Friday, April 26, noon–1:00 pm
Room: Arlington
Informal opportunity for ECPs to meet with people in academic positions to get a better understanding of the requirements for applying for such a post and strategies to maintain one's analytic identity while in academia.

Board Meeting

Friday, April 26, 2:00–3:00 pm
Room: Beacon Hill

Committee on Multicultural Concerns

Invited Panel Co-sponsored with Early Career Psychologists Committee

Protecting the Psychoanalytic Future: Extending Borders & Moving into the 21st Century
Friday, April 26, 8:00–9:50 am
Room: Arlington

Invited Panel Co-sponsored with Early Career Psychologists Committee

Revenge of the Youth: Early/Mid-Career Ethnic Therapists Reflect on a Senior White Analyst's Cross Cultural Work
Friday April 26, 1:00–2:50 pm
Room: Georgian

Discussion Hour Co-sponsored by Section III

"Partnering and Intimacy: Do Diversity and Difference Matter?"
Saturday, April 27, 2:00–2:50 pm
Room: Clarendon

Board Meeting

Saturday, April 27, 4:00–6:00 pm
Room: Stuart

Conversation Hour Co-sponsored by Section VIII

Friday, April 26, 5:00–7:00 pm
Room: Arlington

Reception and Award Presentations Co-sponsored by Sections II, III, IX and Committee on Sexualities and Gender Identities

Award Presentations
Saturday, April 27, 6:30–8:30 pm
Room: Georgian

Outstanding Achievement in the Advancement of Multicultural Concerns presented to Usha Tummala-Narra, Ph.D.

Committee on Psychoanalysis and the Community (formerly Outreach Committee)

Invited Panel

Psychoanalysis and Community: Contemporary Reappraisals of Identity and Interventions
Friday, April 26, 8:00–9:50 am
Room: Statler

Board Meeting

Friday, April 26, Noon–1:00 pm
Room: Hancock

Committee on Psychoanalysis and Health Care

Invited Panel

The Therapist is Ill: The Speakable and Unspeakable
Thursday, April 25, 10:00–11:50 am
Room: Arlington

Board Meeting

Thursday, April 25, Noon–1:30 pm
Room: Fairfield

Live Supervision

Case Presentation Involving an Older Patient
Thursday, April 25, 3:00–3:50 pm
Room: Clarendon

Committee on Sexualities and Gender Identities

Invited Panel

Sexuality, Culture, and Immigration: Dilemmas and Dynamics
Friday, April 26, 1:00–2:50 pm
Room: Statler

Board Meeting

Friday, April 26, Noon–1:00 pm
Room: Fairfield

**Reception and Award Presentations Co-sponsored by Sections II, III, IX and
Committee on Multicultural Concerns**

Saturday, April 27, 6:30–8:30 pm
Room: Georgian

*SGL Award for Outstanding Contributions to Sexualities and Gender Identities to
be presented.*

Early Career Psychologists Committee

Invited Panel Co-sponsored with Committee on Multicultural Concerns

Protecting the Psychoanalytic Future: Extending Borders & Moving into the
21st Century
Friday, April 26, 8:00–9:50 am
Room: Arlington

Invited Panel Co-sponsored with Committee on Multicultural Concerns

Revenge of the Youth: Early/Mid-Career Ethnic Therapists Reflect on a Senior
White Analyst's Cross Cultural Work
Friday April 26, 1:00–2:50 pm
Room: Georgian

**Joint Conversation Hour Co-sponsored with Committee on Education
and Training**

Friday, April 26, noon–1:00 pm
Room: Arlington
Informal opportunity for ECPs to meet with people in academic positions to
get a better understanding of the requirements for applying for such a post and
strategies to maintain one's analytic identity while in academia.

Board Meeting

Saturday, April 27, 11:30 am–1:00 pm
Room: Franklin

Reception

President's Reception for Early Career Psychologists, Graduate Students and
Candidates
Friday, April 26, 6:00–8:00 pm
Room: Georgian

Ethics Committee

Invited Panel

Ethics and the Internship Application Process
Sunday, April 28, 8:00–9:50 am
Room: Clarendon

Graduate Student Committee

Live Supervision Demonstration and Discussion:

Reflecting on the Supervisory Relationship
Saturday, April 27, 8:00–9:50 am
Room: Clarendon

Invited Panels Open to All

Finding Our Way: The Widening Scope of Psychodynamic Clinical Training
Sunday, April 28, 9:00–10:50 am
Room: Arlington

Special Workshops for Graduate Students

Workshop I: Drew Westen, Ph.D.

Friday, April 26, 1:00–2:30 pm
Room: Berkeley

Workshop II: Riccardo Lombardi, M.D.

Saturday, April 27, 2:00–3:30 pm
Room: Hancock

Reception

President's Reception for Graduate Students, Early Career Psychologists and
Candidates
Friday, April 26, 6:00–8:00 pm
Room: Georgian

Committee on International Relations in Psychoanalytic Psychology

Invited Panel

The Trauma of War: Can Psychoanalysis Help Victims of Terror and Abuse?

Saturday, April 27, 8:00–9:50 am

Room: Georgian

Board Meeting

Saturday, April 27, Noon–1:30 pm

Room: St. James

Membership Committee

Sponsored Coffee Break before Keynote Address

Friday, April 26, 3:00–3:30 pm

Room: Imperial Ballroom Foyer

Program Committee

Sunday, April 28, 8:00–9:45 am

Room: Fairfield

Psychoanalytic Psychology Editorial Board

Friday, April 26, 8:00–9:00 am

Room: Fairfield

Publications Committee

Saturday, April 27, 8:00–9:00 am

Room: Cambridge

STEERING COMMITTEE INVITED PANELS

THURSDAY, APRIL 25

Cultures Forged in Trauma: The Impact of Trauma on Societal Processes

8:00–9:50 am

Room: Georgian

Lynne Layton, Ph.D., Alan Roland, Ph.D., Vamik Volkan, M.D.

Transgender Identities, Intersubjectivity, and Psychoanalysis

10:00–11:50 am

Room: Plaza Ballroom

Mark Blechner, Ph.D., Patricia Gherovici, Ph.D., Griffin Hansbury, M.S.W.

Where is the Soul in Psychoanalysis?

10:00–11:50 am

Room: Georgian

Amy Hollywood, Ph.D., Jonathan Lear, Ph.D., Paul Lippman, Ph.D.

FRIDAY, APRIL 26

Master Clinician Case Presentation: A Comparative Conversation

8:00–9:50 am

Room: Georgian

Jody Davies, Ph.D., Diane Elise, Ph.D., Jack Foehl, Ph.D., Kris Yi, Ph.D.

Searching, Sexting and Socializing: Contemporary Technologies in Psychoanalysis and Psychotherapy

10:00–11:50 am

Room: Plaza Ballroom

Todd Essig, Ph.D., Patricia Harney, Ph.D., Abigail Judge, Ph.D., Kimberlyn Leary, Ph.D.

**Boundaries in Psychoanalysis: Inner, Outer, Self and Other:
A Dialogue**

1:00–2:50 pm

Room: Plaza Ballroom

**Larry Brown, Ph.D., Steven Cooper, Ph.D., Jaine Darwin, Psy.D., ABPP,
Melanie Suchet, Ph.D.**

SATURDAY, APRIL 27

**Dissociation and Self/Other Fragmentation: A Self-State
Roundtable**

1:00–2:50 pm

Room: Plaza Ballroom

Philip Bromberg, Ph.D., Adrienne Harris, Ph.D., Allan Schore, Ph.D.

Racism and Othering

3:00–4:50 pm

Room: Plaza Ballroom

**Jessica Benjamin, Ph.D., Michele Contreras, Psy.D., David Eng, Ph.D.,
Usha Tummala-Narra, Ph.D.**

SUNDAY, APRIL 28

Psychoanalysis: A Look into the Future

9:00–10:50 am

Room: Georgian

Jack Drescher, M.D., Spyros Orfanos, Ph.D., ABPP, Dolan Power, Ph.D.



WEDNESDAY APRIL 24

9:00 AM–1:00 PM; 2:00–6:00 PM (All Day)

White Hill Room

Continuing Education Master Classes

An Introduction to the Application of Mentalization Based Therapy to Our Work with Children, Adolescents and Their Families

Norka Malberg, Psy.D., LPC, *presenter*

9:00 AM–12:15 PM

Beacon Hill Room

Continuing Education Master Classes

Understanding and Treating Complex PTSD

Judith Lewis Herman, M.D., *presenter*

9:00 AM–12:15 PM

Whittier Room

Continuing Education Master Classes

Success in Publishing Workshop

Elliot Jurist, Ph.D., Ph.D., *presenter*

1:00–2:30 PM

Beacon Hill Room

Continuing Education Master Classes

A Therapist's Guide to New Media

Kristi Pikiewicz, Ph.D., *presenter*

WEDNESDAY APRIL 24

2:00–5:15 PM

Whittier Room

Continuing Education Master Classes

Transference-Focused Psychotherapy for Narcissistic Personality Disorder: Recent Developments in Treatment and Research

Diana Diamond, Ph.D., presenter

3:00–6:15 PM

Beacon Hill

Continuing Education Master Classes

The Business of Being a Psychodynamic Psychologist in the 21st Century: Building and Marketing Your Practice

Dana L. Casteliano, Psy.D., Robert (Bart) Magee, Ph.D., Steven D. Axelrod, Ph.D., Brenda Lovegrove Lepisto, Psy.D., Devon King, Ph.D., Jonathan Eger, Psy.D., Marilyn Charles, Ph.D., ABPP, presenters

8:00–9:30 PM

Georgian Room

Opening Event

**Politics and Psychoanalysis
A Conversation with Drew Westen, Ph.D.**



**THURSDAY
APRIL 25**

8:00–9:50 AM

Plaza Ballroom

Section V Invited Panel

**TH-1 Applied Clinical Psychoanalysis:
A Roundtable Discussion**

David Lichtenstein, Ph.D.

The Public Practice of Psychoanalysis

Robert Prince, Ph.D., ABPP

Psychoanalysis and Social Context

Ghislaine Boulanger, Ph.D.

Training Mental Health Professionals After Hurricane Katrina

William Braun, Psy.D.

Psychodynamic Consultation in Schools

Mary-Joan Gerson, Ph.D.

Caring for Caregivers: Consultation in Non-Profit Agencies

Marilyn Jacobs, Ph.D., ABPP

The Psychoanalyst as a Member of the Medical Treatment Team:
Impasse, Recognition and Reward

Larry Rosenberg, Ph.D.

Psychoanalysis in the Courtroom and in the Service of the Child Victim

THURSDAY APRIL 25

THURSDAY APRIL 25

8:00–9:50 AM

Statler Room

Panel

TH-2 Developing Relational Resiliency: Psychoanalysis, Psychosis, and Community

Sharon Krikorian, Ph.D.

Working with Psychosis: Finding Meaning Through Understanding, Engagement and Community

Barri Belnap, M.D.

Supporting Reality Testing and Resilience in Work with Psychotic Patients and Their Families Around Developmental and Psychopharmacological Issues

Jeb Fowler, Ph.D.

Psychological Testing's Utility in Understanding the Social Context of Psychotic Experience

Jennifer Durham-Fowler, Ph.D.

Finding Resilience in Psychotic Experience: The Researcher's Role

Marilyn Charles, Ph.D., ABPP, chair and moderator

8:00–9:50 AM

Berkeley Room

Candidate Outreach Committee Invited Panel

TH-3 Where We Come From and Where We Are Going: Reflections on Formative Experiences From Family, Jazz, and Politics

Ethan Graham, Ph.D.

What is This Thing Called Psychoanalysis? A Candidate's Search Through Jazz to Find Answers

Max Malitzky, Psy.M.

Where Did I Come From? Where Am I Going? How Will You Get Me There?—Personal and Theoretical Reflections on the Treatment of Patients with Absent or Missing Fathers

Knuth Mueller, Dipl. Psych, Dipl. Paed

On Behalf of the Agency: Encounters Between the Psychoanalytic Community and the U.S.-American Intelligence Community Since 1940—A Short History of an Unexpected Liaison

Stephen Solow, Ph.D., discussant

Jonathan Eger, Psy.D., chair and moderator

8:00–9:50 AM

Georgian Room

Steering Committee Invited Panel

TH-4 Cultures Forged in Trauma: The Impact of Trauma on Societal Processes

Lynne Layton, Ph.D.

The Psychic Effects of Neoliberalism

Alan Roland, Ph.D.

Trauma, Dislocation, and Dissociation: India/Pakistan Partition

Vamik Volkan, M.D.

The Impact of Large Group Identity on Border Psychology

Kate Roy Sullivan, Ph.D., chair

9:00 AM–4:00 PM

Imperial Ballroom

Board of Directors Meeting

9:00–9:50 AM

Clarendon Room

Paper

A Switch of the Medium: Sadomasochism and Female Creativity

Cassie Kaufmann, M.A.

Sophia Frydman, M.F.A.

Joseph Newirth, Ph.D., ABPP, chair

9:00–9:50 AM

Hancock Room

Meet the Author

Anatomy of Regret: From Death Instinct to Reparation & Symbolization in Vivid Clinical Cases

Susan Kavalier-Adler, Ph.D., ABPP, D.LITT.

THURSDAY APRIL 25

THURSDAY APRIL 25

10:00–11:50 AM

Clarendon Room

Panel

**TH-5 The Experience of Diaspora: Directions for
Psychoanalysis from the Intersections of Cultures**

Lama Khouri, L.M.S.W., M.S.C.

Being an Arab in America: Waiting For the Second Shoe to Drop

Adam Kaplan, Ph.D.

Which Came First, The Pathology or The Cure: The Defining Influence of Medical Culture

J.P. Chevront, Jr., Psy.D.

Sexual Transmission: Cultural Identity, Technology, and Border Crossings

William D. Lubart, Ph.D., moderator

10:00–1:50 AM

Berkeley Room

Panel

**TH-6 Psyche and Soma: Bridging Borders, Re-organizing
Boundaries**

Galit Atlas, Ph.D.

Arousal, Distress and Regulation; In Bed, on the Couch and the Space Between

Evelyn Rappoport, Psy.D.

Dynamic Linking with Attention and Intention: Redefining the Rules of Engagement

Steven Kuchuck, L.C.S.W., moderator

Jessica Benjamin, Ph.D., discussant

10:00–11:50 AM

Statler Room

Panel

**TH-7 Gendered Encounters With Race and Place:
Experiences of Marginalized Women**

Leilani S. Crane, Psy.D.

Multiracial Daughters of Asian Immigrants: Identity and Agency

Nancy Caro Hollander, Ph.D.

Gendered Paradoxes of Migration

Shelley Savage, Psy.D.

Clinical Discourses in Appalachia

10:00–11:50 AM

Georgian Room

Steering Committee Invited Panel

TH-8 Where is the Soul in Psychoanalysis?

Paul Lippmann, Ph.D.

Religion and Psychoanalysis: A Marriage Made in Heaven/Hell

Jonathan Lear, Ph.D.

Psychoanalysis and Transcendence

Amy Hollywood, Ph.D.

On Dying, the Soul, and Imagination

Stephen Behnke, J.D., Ph.D., chair

Umi Chong, Psy.D., chair

10:00–11:50 AM

Plaza Ballroom

Steering Committee Invited Panel

TH-9 Transgender Identities, Intersubjectivity, and Psychoanalysis

Mark J. Blechner, Ph.D.

Countertransference and Counterresistance in the Cisgendered Psychoanalyst
Working with a Transgendered Patient

Patricia Gherovici, Ph.D.

Neither Sex Nor Gender: Learning from Transgender

Griffin Hansbury, M.S.W.

Queer Penetrations: Working in the Borderlands of Masculine Embodiment from
a Transgender Position

Johanna Malone, Ph.D., chair

10:00–11:50AM

Arlington Room

Committee on Psychoanalysis and Health Care Invited Panel

TH-10 The Therapist Is Ill: The Speakable and Unspeakable

Judith Logue, Ph.D.

When the Therapist Is Ill

Stephanie Brody, Psy.D.

Analytic Self Disclosure as Divergent Conflict: Resolving the Irreconcilable

Stuart Pizer, Ph.D., ABPP, discussant

Maureen Murphy, Ph.D., moderator

THURSDAY APRIL 25

Noon-1:30 PM

Fairfield Room

Committee on Psychoanalysis and Health Care Board Meeting

1:00-2:50 PM

Clarendon Room

Panel

TH-11 Of Digital Born

Michael C. Klein, Ph.D.

Love in the Time of Facebook

Amy Torchia, Psy.D.

I H8 Losing U: The Fate of the Body, Loss and Mourning During Adolescence in The Age of The Mobile Phone

Cristiano Santostefano, M.A., M.Psy.

Jessica Greenberg, M.Psy.

@Division39: The #Psychodynamic Community Mental Health Clinic in the Social Media Era

Henry Seiden, Ph.D., chair and discussant

1:00-2:50 PM

Georgian Room

Panel

TH-12 Embodied Potential Space: How Actual Physical Space Helps Us Create Meaning

Mark Gerald, Ph.D.

You Can Take the Boy Out of the Bronx

Leanne Domash, Ph.D.

Personal Homes and Public Memorials: How We Create Them and They Create Us

Malcolm Slavin, Ph.D.

Sacred Prehistoric Spaces: Cave Art, Music and the Capacity to Bear the Human Condition

Jill Gentile, Ph.D., discussant and moderator

THURSDAY APRIL 25

1:00-2:50 PM

Arlington Room

Panel

TH-13 Diversifying Psychoanalysis: Reasons and Resistances

Nicholas Samstag, Ph.D.

Marketing, Magnanimity, and Maintenance: Considering the Lack of Diversity in Psychoanalysis

Helen Fronshtein, Ph.D.

The Phenomenon of the Marginalization of Persons of Color: A Candidate's Perspective

Cleonie White, Ph.D.

Inside/Out: The Analyst's Prejudices

Motoni Fong-Hodges, Ph.D.

Building Multicultural Competence From Within

Jay S. Kwawer, Ph.D., discussant

Anton H. Hart, Ph.D., discussant

1:00-2:50 PM

Statler Room

Panel

TH-14 Portals to the Unknown: Psychoanalysis and/as Art

Linda Luz-Alterman, Ph.D.

Transcending Boundaries: Primary Process, Creativity and the Art of Psychoanalysis

Johanna Malone, Ph.D.

Voice Without Words: When Experience is Formulated in Musical Language

Ben Weiss, M.S.W.

Bossypants as Learning Tool: The Place of Improvisation in Psychotherapy

Jan Lerbinger, Ph.D., discussant

THURSDAY APRIL 25

THURSDAY APRIL 25

1:00–2:50 PM

Berkeley Room

Panel

TH-15 Finding, Transcending, and Transgressing Conceptual Boundaries in the Theorizing of Desire

Lynne Harkless, Ph.D.

On Becoming a Sexual Subject: Identifying with Desire

Avgi Saketopoulou, Psy.D.

The Pain/Pleasure Seam: Borrowing from French Psychoanalysts

Dianne Elise, Ph.D., discussant

1:00–2:50 PM

Plaza Ballroom

Section II Invited Panel

TH-16 How Attachment Theory and Research Informs our Work with Hard-to-Reach Parents and Their Young Children

Susan Bers, Ph.D.

A Clinical Case Illustrating Mentalization-Based Individual Psychotherapy for Mothers with Substance Use Disorders

Jordan Bate, M.A.

Identifying Therapeutic Action and Change by Applying Attachment Theory to Intervention With Vulnerable Families

Linda Mayes, M.D., discussant

Miriam Steele, Ph.D., discussant

Norka Malberg, Psy.D., chair

3:00–3:50 PM

Clarendon Room

Committee on Psychoanalysis and Health Care

Live Supervision-Case Presentation Involving an Older Patient

Introduction: **Judith Alpert, Ph.D.**

Case Presentation: **Frank Lawatsch**

Live Supervision:

Sue Grand, Ph.D.

Ruth Livingston, Ph.D.

3:00–3:50 PM

Berkeley Room

Meet the Author

Conundrums: A Critique of Contemporary Psychoanalysis

John Mills, Psy.D., Ph.D., ABPP

3:00–3:50 PM

Plaza Ballroom

Meet the Authors—An Authors Fair

A Psychodynamic Understanding of Modern Medicine

Maureen O'Reilly-Landry, Ph.D.

An Integration of Child Treatment and Assessment

Steven Tuber, Ph.D., ABPP

Listening with Purpose

Jack Danielian, Ph.D.

Patricia Gianotti, Psy.D.

Pride and Joy

Kenneth Barish, Ph.D.

3:00–3:50 PM

Hancock Room

Meet the Author

Taking the Transference, Reaching toward Dreams/Lost in Transmission

M. Gerald Fromm, Ph.D.

3:00–3:50 PM

Statler Room

Paper

To See Is To Disappear

Jade McGleughlin, L.I.C.S.W.

Adrienne Harris, Ph.D., discussant

THURSDAY APRIL 25

THURSDAY APRIL 25

4:00-4:50 PM

Georgian Room

Scientific Award

Recipient: **Paul L. Wachtel, Ph.D.**

Paper: Psychoanalysis and the Moebius Strip: Where Depth Meets Context



Dr. Wachtel is CUNY Distinguished Professor in the doctoral program in clinical psychology at City College and the Graduate Center of the City University of New York. He did his undergraduate studies at Columbia, received his doctorate in clinical psychology at Yale and is a graduate of the NYU Postdoctoral Program in Psychoanalysis and Psychotherapy, where he is now a member of the faculty. He is also on the faculty of the Stephen Mitchell Center for Relational Studies. He was a co founder of the Society for the Exploration of Psychotherapy Integration (SEPI) and has served on its Steering Committee since its founding. The central themes of his writings, lectures and workshops center on the theory and practice of psychotherapy; the possibilities of integrating competing therapeutic approaches and the creation of an integrative theory that reconciles the differing observations on which each approach is based; and the applications of psychological theory and research to the major social issues.

5:00-6:20 PM

Plaza Ballroom

President's Address and Award Ceremony

Welcome: Boston Steering Committee

Awards Chair: **Mary-Joan Gerson Ph.D.**

Award Presentations

Leadership Award: **Marilyn Charles, Ph.D., ABPP**

Founders Award In Memoriam: **Norbert Freedman, Ph.D. (1922-2011)**

Chair: **William MacGillivray, Ph.D., ABPP**

President's Address: **Frank L. Summers, Ph.D., ABPP**

Psychoanalysis in the Age of Nikeism

Awardees



Marilyn Charles is a staff psychologist at the Austen Riggs Center and a psychoanalyst in private practice in Stockbridge, MA. A Training and Consulting Analyst at the Michigan Psychoanalytic Council and the Chicago Center for Psychoanalysis,

she is a contributing editor of *Psychoanalysis, Culture, and Society*, and a member of the editorial boards of numerous other psychoanalytic journals. As the Co-Chair of the Association for the Psychoanalysis of Culture and Society (APCS) and also Co-Chair of the APA Division 39 Early Career Committee, she is actively engaged in mentoring, creating professional opportunities, creating opportunities for dialogue between diverse groups with common interests, and promoting community involvement for those in the helping professions. Research interests include creativity, psychosis, and the intergenerational transmission of trauma. Marilyn is also an artist and a poet, and serves on the APA Division 39 Task Force for Psychoanalysis and the Humanities. She has presented her work nationally and internationally, publishing over 70 articles and book chapters and four books including most recently, *Working with Trauma: Lessons from Bion and Lacan* (Jason Aronson, 2012).



Norbert Freedman, Ph.D. (1922-2011)

A native of Hamburg, Germany, Norbert Freedman emigrated under the pressure of the Nazi regime, taking the trans-Siberian railroad and settling in Seattle in 1940. After graduating from the University of Washington, he moved to New York, where he received a doctorate in psychology from Columbia University. Despite his blindness, he established himself as a psychoanalyst and a professor of psychology at Downstate Medical Center. A past president of the Institute for Psychoanalytic Training and Research (IPTAR) and author of numerous publications, he was passionately devoted to teaching, research, and collaborative work. He was a mentor, role model, educator, clinician and collaborator, known for his generous spirit and a force for understanding. His international work in the psychoanalytic community touched the lives of countless students, candidates and colleagues.

6:30-8:00 PM

Imperial Ballroom

Scientific Poster Session

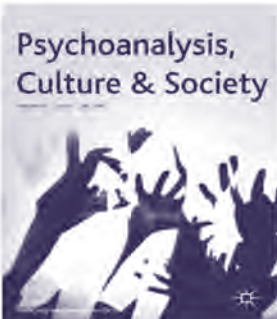
6:30-8:00 PM

Imperial Ballroom

Welcome Reception

Featuring live Jazz music by **The Richard Hale Shaw Band**

Psychoanalysis Journals from Palgrave Macmillan



Psychoanalysis,
Culture & Society

Psychoanalysis, Culture & Society critically addresses the intersection between psychoanalysis and the social world. It is the official journal of the Association for the Psychoanalysis of Culture & Society.

Editors: Lynne Layton and Peter Redman

www.palgrave-journals.com/pcs/



The American Journal
of Psychoanalysis

The American Journal of Psychoanalysis is an international forum for communicating a broad range of contemporary clinical and theoretical concepts of psychoanalysis and for presenting related investigations in allied fields.

Editor: Giselle Galdi

www.palgrave-journals.com/ajp/



subjectivity

Subjectivity is an innovative, transdisciplinary journal examining the social, cultural, historical and material processes, dynamics and structures of human experience.

Editors: Lisa Blackman and Valerie Walkerdine

www.palgrave-journals.com/sub/

For more information, visit:

www.palgrave-journals.com/psychoanalysis/

Division 39 conference attendees receive a **20% discount** on personal subscriptions! When ordering online, please enter the code: **2013DIV39**

*Offer valid through June 30, 2013



FRIDAY APRIL 26

7:00–9:00 AM

Beacon Hill

Section IV Senate Meeting

8:00–9:00 AM

Fairfield Room

Editorial Board Meeting

8:00–9:50 AM

Plaza Ballroom

Section VIII Invited Panel

FR-1 In/Out, Up/Down, Near/Far: Crucial Dimensions in Couple and Family Therapy

Shelly Goldklank, Ph.D.

“I’m Just a Soul Whose Intentions Are Good, Oh Lord, Please Don’t Let Me Be Misunderstood”

Carl Bagnini, M.S.W., L.C.S.W., B.C.D.

“Don’t Just Do Something, Sit There!”: Caveats for Family Therapists Working with Divorce and Re-marriage

Noa Ashman, MSW, L.C.S.W.-C

The More You Ignore Me, The Closer I Get: The Choreography of Intimacy

Shelly Goldklank, Ph.D., chair and moderator

FRIDAY APRIL 26

Statler Room

8:00–9:50 AM

Committee on Psychoanalysis and the Community Invited Panel
(formerly the Outreach Committee)

FR-2 Psychoanalysis and Community: Contemporary Reappraisals of Identity and Interventions

Judith Alpert, Ph.D.

Psychoanalysis and Community: Expanding Our Analytic Identity

Nancy Caro Hollander, Ph.D.

Psychoanalysis Beyond the Couch in Extreme Social Situations

Warren Spielberg, Ph.D.

Resolving Enactments Between Israelis and Palestinians; Lessons from Dialogue

Victoria Mills, L.C.S.W.

The Psychoanalyst Makes Documentary Films

Elizabeth Goren, Ph.D., *discussant and moderator*

Clarendon Room

8:00–9:50 AM

Panel

FR-3 University Violence, Trauma, and Growth: New Frontier for Psychoanalytic Application

Dan Rose, Psy.D.

Thinking Dangerous Thoughts: Bion as a Guide for the University Psychologist in an Age of Violence

Therese Borges, B.A.

Attachment: Navigating Difficult Experiences Through Maintaining a Secure Base

Kimberly Prince Korobov, M.A., M.DIV.

Sacred Songs in Strange Lands: Spiritual Relatedness in the Socially-Alienating Context of Trauma

Gregory Stevens, M.S.

Dreaming Together: Growing Through Client Suicide

FRIDAY APRIL 26

Georgian Room

8:00–9:50 AM

Steering Committee Invited Panel

FR-4 Master Clinician Case Presentation: A Comparative Conversation

Case Presentation: **Jack Foehl, Ph.D.**

Discussants:

Jody Davies, Ph.D.

Kris Yi, Ph.D.

Dianne Elise, Ph.D.

Miriam Frankel, Ph.D., *chair*

Berkeley Room

8:00–9:50 AM

Committee on Education and Training Invited Panel

FR-5 Navigating Psychoanalytical Orientation As Minority Status: Administrator, Academic, Researcher, Early Career Psychologist, Intern, & Graduate Student

David L. Downing, Psy.D., ABPP

Organisational Containing & Holding Functions of the Psychoanalyst-Administrator

William Gottdiener, Ph.D.

The Two Cultures of Contemporary Psychoanalysis: Research & Clinical

Richard Ruth, Ph.D., ABPP

Queering Training

Almas Merchant, Ph.D.

The Subversive Art of Psychoanalysis: Working as a Early Career Psychoanalytic Psychologist

Kori Bennett, M.A.

Observer Meets Observing Ego: Navigating Theory and Identity on Internship

Emily Boshkoff Johnson, M.A.

Inside Out & Outside In: Negotiating a Psychoanalytical Identity in Anti-Psychoanalytical Spaces

Kori Bennett, MA, *chair*

Emily Boshkoff Johnson, MA, *moderator*

David L. Downing, Psy.D., ABPP, *discussant*

FRIDAY APRIL 26

8:00–9:50 AM

Arlington Room

Committee on Multicultural Concerns & the Early Career Psychologists
Committee Invited Panel

**FR-6 Protecting the Psychoanalytic Future: Extending
Borders & Moving into the 21st Century**

Daphny Ainslie, Ph.D.

The Paradigm is Shifting: An ECP Reflects on the Application of Psychodynamic
Concepts in the Age of Managed Care

Daniel Gaztambide, PsyM.

The Future of Psychoanalysis & Religion: A Liberation Psychology Perspective

Ankhesemun Ball, Ph.D.

The Conundrum of Confidentiality

David Ramirez, Ph.D., ABPP, moderator

Shamaila Khan, Ph.D., chair

9:00–9:50 AM

Hancock Room

Meet the Author

Still Practicing: The Heartaches and Joys of a Clinical Career

Sandra Buechler, Ph.D.

10:00–11:50 AM

Georgian Room

Panel

**FR-7 The Resurrection of Agency from the Ashes of War: A
Son as Therapist to his Father—Clinical Presentation and
Discussion**

Jonathan H. Slavin, Ph.D., ABPP

The Resurrection of Agency from the Ashes of War: A Son as Therapist to his
Father—Clinical Presentation and Discussion

Darlene B. Ehrenberg, Ph.D., ABPP

On the Struggle to Break Intergenerational Chains of Transmission of Trauma

Miki Rahmani, M.A., moderator

FRIDAY APRIL 26

10:00–10:50 AM

Hancock Room

Meet the Author

Working with Trauma: Lessons from Bion and Lacan

Marilyn Charles, Ph.D., ABPP

David Ramirez, Ph.D., ABPP, moderator

10:00–11:50 AM

Arlington Room

Section IV Invited Panel

**FR-8 Intergenerational Transmission of WW2: The Impact of
Our Parents' Stories**

Marsha McCary, Ph.D.

The Long Awaited Homecoming: The Effects of Heroic Identifications and
Dissociated Affects on the Family Path

Jaine L. Darwin, Psy.D., ABPP

What Did You Do in the War Daddy: Questions Unasked and Unanswered

Arlene (Lu) Steinberg, Psy.D.

Undoing the Othering of the Holocaust Survivor: Experiencing Parental Tales of
Courage and Terror During WW2

Sue Grand, Ph.D., discussant

Arlene (Lu) Steinberg, Psy.D., moderator

10:00–11:50 AM

Statler Room

Panel

**FR-9 Mindscapes and Landscapes: Multiplicity and the
Search for Home in the Global World**

Andrea Celenza, Ph.D.

The Positions of Subjectivity

Andrew Harlem, Ph.D.

Toward a Psychoanalytic Theory of Home

Adrienne Harris, Ph.D., discussant

Jack Foehl, Ph.D., moderator

FRIDAY APRIL 26

FRIDAY APRIL 26

10:00–11:50 AM

Clarendon Room

Section I Invited Panel

FR-10 Psychoanalysis: Making It Better for You

Aleksandra Wagner, Ph.D.

Jane Kupersmidt, Ph.D., *discussant*

Jane Tucker, Ph.D., *chair*

11:00–11:50 AM

Hancock Room

Meet the Author

The Psychoanalytic Vision: The Experiencing Subject, Transcendence, and Therapeutic Process

Frank L. Summers, Ph.D., ABPP

Spyros D. Orfanos, Ph.D., ABPP, *moderator*

10:00–11:50 AM

Plaza Ballroom

Steering Committee Invited Panel

FR-11 Searching, Sexting and Socializing: Contemporary Technologies in Psychoanalysis and Psychotherapy

Todd Essig, Ph.D.

Screen Relations: What We Gain and What We Lose

Kimberlyn Leary, Ph.D., ABPP

Thinking in the Aggregate: Quantified Selves, Social Media, and “Big Data”

Abigail Judge, Ph.D.

The Digital Third: Social Media and Online Technology in Psychotherapy with Adolescents

Patricia Harney, Ph.D., discussant and chair

Noon–1:00 PM

Hancock Room

Committee on Psychoanalysis and Community Board Meeting

Noon–1:00 PM

Fairfield Room

Committee on Sex and Gender Identities Board Meeting

Noon–1:00 PM

Beacon Hill Room

Candidate Outreach Committee Board Meeting

Noon–1:00 PM

Berkeley Room

Awards Committee Meeting

Noon–1:00 PM

Arlington Room

Joint Conversation Hour: Analysts in Academia

Co-sponsored by the Early Career Psychologists Committee and the Committee on Education and Training

Facilitators: **Almas Merchant, Ph.D., David L. Downing, Psy.D., ABPP, Jennifer Durham-Fowler, Ph.D.**

Informal opportunity for ECPs to meet with people in academic positions to gain a better understanding of the requirements for applying for such a post and strategies to maintain one’s analytic identity while in academia.

10:00–11:50 AM

Berkeley Room

Panel

FR-12 A Womb of Her Own: Women’s Struggle for Reproductive Autonomy

Ellen K. Toronto, Ph.D.

Women: The “Intimate” Other

Jane Hassinger, M.S.W., D.C.S.W.

Providers Share: Reflections on Stigma and Maternal Thinking in Abortion Care

Marilyn Metz, Ph.D., ABPP

21st Century War on Women

Ellen K. Toronto, Ph.D., moderator

FRIDAY APRIL 26

1:00-1:50 PM

Hancock Room

Meet the Author

A Psychotherapy for the People

Lewis Aron, Ph.D.

Karen Starr, Psy.D.

Adrienne Harris, Ph.D., moderator

1:00-2:30 PM

Berkeley Room

Graduate Student Workshop with

Drew Westen, Ph.D.

1:00-2:50 PM

Arlington Room

Panel

FR-13 Jung's Global Contributions to a Social World

Jon Mills, Psy.D., Ph.D., ABPP

The Pursuit of Transcendence in Jung's Metaphysics

John Beebe, M.D.

The Role of Internal Objects in Jung's 'Red Book'

Dan Merkur, Ph.D.

The Creativity of Dreams: Freud Blinked, Jung Didn't

1:00-2:50 PM

Georgian Room

Committee on Multicultural Concerns & the Early Career Psychologists Committee
Invited Panel

**FR-14 Revenge of the Youth: Early/Mid-Career Ethnic Therapists
Reflect on a Senior White Analyst's Cross Cultural Work**

Frank L. Summers, Ph.D., ABPP

Between Oblivion and Stereotype: Ethnicity in the Analytic Dyad

Sanjay Nath, Ph.D.

Shelley Savage, Psy.D.

Kris Yi, Ph.D., chair and moderator

FRIDAY APRIL 26

1:00-2:50 PM

Clarendon Room

Panel

FR-15 What Age is Desire?

Stephen Lugar, Psy.D.

Rite of Passage?

Loong Kwok, Psy.D.

Object of Desire

Stephen Hartman, Ph.D.

Darren and I Did Sit Ups

Robert (Bart) Magee, Ph.D.

What Ages Desire?

Michael Donnell, Psy.D.

Death, Desire & Disgust

Stephen Hartman, Ph.D., chair

1:00-2:50 PM

Plaza Ballroom

Steering Committee Invited Panel

**FR-16 Boundaries in Psychoanalysis: Inner, Outer, Self and
Other, A Dialogue**

Larry Brown, Ph.D.

Steven Cooper, Ph.D.

Melanie Suchet, Ph.D.

Jaine L. Darwin, Psy.D., ABPP, moderator

1:00-2:50 PM

Statler Room

Committee on Sexualities and Gender Identities Invited Panel

**FR-17 Sexuality, Culture, and Immigration:
Dilemmas and Dynamics**

Brian Brown, Psy.D.

Case Presentation

J.P. Chevront, Jr., Ph.D., discussant

Nina K. Thomas, Ph.D., ABPP, discussant

Scott D. Pytluk, Ph.D., chair

Shara Sand, Psy.D., chair

FRIDAY APRIL 26

2:00-3:00 PM

Beacon Hill Room

Committee on Education and Training Board Meeting

3:00-3:30 PM

Imperial Ballroom Foyer

Coffee Break Sponsored by Membership Committee

3:30-5:00 PM

Imperial Ballroom

FR-18 Keynote Address

Drew Westen, Ph.D.

Conflict and Compromise in Washington: The Psychopathology of Everyday Legislation



Drew Westen, Ph.D., is a professor in the Departments of Psychology and Psychiatry at Emory University in Atlanta, GA. An active clinician, researcher and political consultant, he is the author of *The Political Brain: The Role of Emotion in Deciding the Fate of the Nation*. He is a frequent commentator on political and psychological issues in the media. He has published numerous articles and written two other books. He received his Ph.D. in clinical psychology at the University of Michigan, where he taught for six years. For several years, he was Chief Psychologist at Cambridge Hospital and Associate Professor at Harvard Medical School. His major areas of research are personality disorders, adolescent psychopathology, political psychology, psychotherapy effectiveness, and the interface of psychodynamics and neuroscience.

Chair: **Patricia Harney, Ph.D.**

5:00-6:00 PM

White Hill Room

Candidate Outreach Committee Reception

5:00-6:30 PM

Fairfield Room

Section III Board Meeting

FRIDAY APRIL 26

5:00-7:00 PM

Arlington Room

**Section VIII and Committee on Multicultural Concerns
Conversation Hour**

6:00-8:00 PM

Berkeley Room

Section I Reception

6:00-8:00 PM

Georgian Room

**President's Reception for Graduate Students, Early Career
Psychologists and Candidates**

One of U.S. News
“Best Hospitals”
in Psychiatry

AUSTEN RIGGS CENTER

A distinctive psychiatric hospital
Intensive psychotherapy in an open community.

Stockbridge, MA 01262 800-517-4447 www.austenriggs.org

Division **39** FUND FOR PSYCHOANALYSIS

Express your passion for the psychoanalytic perspective by making a pledge or donation to our own Division 39 Fund. The mission of the Fund is to support programs in education, research, and service consistent with psychoanalytic principles. The formal mission statement and pledge form can be found at our website, division39.org or at this Division Spring meeting in Boston.

Make a pledge or donation at this Spring Meeting and join a drawing for a free registration for the 2014 Division Spring Meeting in New York City.



SATURDAY APRIL 27

8:00–9:00 AM

Cambridge Room

Publications Committee Meeting

8:00–10:00 AM

Cambridge Room

Section IV Open Meeting

8:00 AM–NOON

Stuart Room

American Board and Academy of Psychoanalysis (ABAPsa) Board Meeting

8:00–9:50 AM

Arlington Room

Panel

SA-1 Immigration and the Intergenerational Transmission of Trauma

Christine C. Kieffer, Ph.D., ABPP

Immigration and the Intergenerational Transmission of Trauma: Multiple Borders, Multiple Contexts

Monisha C. Nayar-Akhtar, Ph.D.

Intergenerational Transmission of Trauma, the Socio-cultural Context: Immigration and Beyond

Usha Tummala-Narra, Ph.D., discussant

Dennis Debiak, Psy.D., moderator

SATURDAY APRIL 27

SATURDAY APRIL 27

8:00–9:50 AM

Plaza Ballroom

Panel

SA-2 Immunity, Impunity, Amnesty or Trial: Psychoanalytic Perspectives on “Justice” Following Political Violence

Nina K. Thomas, Ph.D., ABPP

Do Trials Matter: The Meaning of “Justice” and “Repair” for Political Crimes

Nancy Caro Hollander, Ph.D.

The Psychosocial Cost of Political Impunity

Stephen Hartman, Ph.D.

Just and Unjust Analyses: Political Commentary and Psychoanalytic Intervention

Stephen Hartman, Ph.D., discussant and chair

8:00–9:50 AM

Statler Room

Panel

SA-3 Psychoanalysis In Community Settings: National and International Perspectives

Neil Altman, Ph.D.

Psychoanalysis in the Community

Ricardo Ainslie, Ph.D., ABPP

Psychoanalytic Concepts in the Formulation of Social Fabric Interventions in Communities Ravaged by Mexico’s Drug War

Milena Claudius, M.A.

Psychoanalytic Perspectives in an Urban School: Experiences of Adolescents and their Peer Mentors

David Ramirez, Ph.D., ABPP, discussant

Daphny Ainslie, Psy.D., chair

8:00–9:50 AM

Berkeley Room

Panel

SA-4 Locating Ourselves: Immigration Stories and Psychoanalytic Process

Victoria C. Demos, Ph.D.

Mind the Gap: Between Remembering and Disavowal

Susan Klebanoff, Ph.D.

“Where From Are You?” How a Sense of Otherness Gets Transformed From Father to Daughter to Therapeutic Dyad

Julia Beltsiou, Ph.D.

Seeking Home in the Foreign

Jessica Benjamin, Ph.D., discussant

8:00–9:50 AM

Georgian Room

Committee on International Relations in Psychoanalytic Psychology Invited Panel

SA-5 The Trauma of War: Can Psychoanalysis Help Victims of Terror and Abuse?

Michael A. Grodin, M.D.

Caring for Survivors of Mass Trauma with Particular Emphasis on the Holocaust

Jessica Stern, Ph.D.

Talking to Terrorists

Kenneth I. Reich, Ed.D., chair

Marilyn S. Jacobs, Ph.D., ABPP, chair

8:00–9:50 AM

Clarendon Room

Graduate Student Committee Invited Panel OPEN TO ALL

SA-6 Live Supervision Demonstration and Discussion: Reflecting on the Supervisory Relationship

Brian Brown, Psy.D., chair and moderator

Jason Butler, M.A., supervisee

Robert (Bart) Magee, Ph.D., supervisor

Joan Sarnat, Ph.D., senior discussant

Gregory J. Stevens, M.S., graduate student discussant

SATURDAY APRIL 27

SATURDAY APRIL 27

10:00-11:30 AM

Imperial Ballroom

SA-7 Keynote Address

Riccardo Lombardi, M.D.

Working at the Frontiers of Nothingness: The Struggle to Develop Subjectivity



Riccardo Lombardi, M.D., psychiatrist and psychoanalyst, is a member of the International Psychoanalytic Association and Training and Supervising Analyst of the Italian Psychoanalytic Society. He has published papers on the body-mind relation, time, psychosis and other severe thought disorders in international peer-reviewed journals such as *International Journal of Psychoanalysis*, *Psychoanalytic Quarterly*, *Psychoanalytic Dialogues*, etc. He is co-author of the book: *Emotion as Infinite Experience* (Milan, Angeli, 2007). He is in full-time private practice in Rome.

Chair: Usha Tummala-Narra, Ph.D.

11:30 AM-1:00 PM

Franklin Room

Early Career Psychologists Committee Board Meeting

NOON-1:30 PM

St. James Room

Committee on International Relations Board Meeting

NOON-2:00 PM

Off Site

Section V Board Meeting

NOON-2:00 PM

Cambridge Room

Section II Board Meeting

1:00-1:50 PM

Clarendon Room

Discussion Hour

Dialogue: Expanding the Multicultural Frontiers of Our Division

Leilani S. Crane, Psy.D.

Neha M. Patel, Psy.D.

Shelley M. Savage, Psy.D.

1:00-2:50 PM

Berkeley Room

Panel

SA-8 Toward a Global PDM-2: Conceptual and Empirical Issues

Francesco Gazzillo, Ph.D.

New PDM Axis P Derived Instruments

Vittorio Lingiardi, M.D.

Report on the International Task Force for the Development of PDM-2

Robert M. Gordon, Ph.D.

Operationalizing the PDM and Integrating it with the ICD and DSM

Nancy McWilliams, Ph.D., ABPP

Comments and New Directions

Nancy McWilliams, Ph.D., ABPP, moderator

1:00-2:50 PM

Georgian Room

Panel

SA-9 Relational Analysts Critique Relational Psychoanalysis

Lewis Aron, Ph.D.

The Current State of Relational Psychoanalysis: Polarization, Thirds, Pluralism, Eclecticism, and Integration

Sue Grand, Ph.D.

On Enactment: A Clinical and Epistemological Critique

Malcolm Slavin, Ph.D. and Hazel Ipp, Ph.D., in dialogue

On Not Mistaking the Parts for the Whole: Preserving Multiplicity and Tension Within Relational Theory

SATURDAY APRIL 27

1:00–2:50 PM

Plaza Ballroom

Steering Committee Invited Panel

**SA-10 Dissociation, Regulation, and Self-Other Fragmentation:
A Self-State Roundtable**

Phillip Bromberg, Ph.D.

Adrienne Harris, Ph.D.

Allan Schore, Ph.D.

Johanna Malone, Ph.D., *chair*

1:00–2:50 PM

Arlington Room

Section IX Invited Panel

**SA-11 Social Justice and Psychoanalytic Ethics
(Roundtable Discussion)**

Lynne Layton, Ph.D.

Stephen Soldz, Ph.D.

Stephen Hartman, Ph.D.

Shamaila Khan, Ph.D.

Donna Bassin, Ph.D., *moderator*

Susan Gutwill, M.S., C.S.W., CGP, *chair*

1:00–2:50 PM

Statler Room

Panel

**SA-12 Families Coming Out: Clinical Implications and Clinical
Frontiers of LGBTQ Parenting**

Sheri P. Ashcraft, Psy. D.

Language Frontiers: Creating Borders for Psychic Space

Shelley Payne, Ph.D.

Developmental Considerations for the Children of LGBTQ Parents: A Different
“Coming Out”

Lynne E. Harkless, Ph.D.

Psychoanalysis Coming Out: From Consulting Room to Community,
Unconscious Conflict in LGBTQ Parents

Jill Hartog, M.S.W., L.C.S.W.

New Frontiers in Family Formation: Personal and Clinical Challenges for the
Family Therapist

SATURDAY APRIL 27

2:00–2:50 PM

Clarendon Room

Section III & Committee on Multicultural Concerns

Discussion Hour

“Partnering and Intimacy: Do Diversity and Difference Matter?”

Kris Yi, Ph.D.

Mary-Joan Gerson, Ph.D.

2:00–3:30 PM

Hancock Room

Graduate Student Workshop with

Riccardo Lombardi, M.D.

3:00–3:50 PM

Clarendon Room

Meet the Authors

**The Psychological World of African American Boys and Young
Men—Two Volumes**

Warren E. Spielberg, Ph.D.

Kirkland Vaughans, Ph.D.

3:00–4:50 PM

Georgian Room

Panel

**SA-13 How to Witness Individual and Global Trauma:
Learning from the Holocaust**

Nancy R. Goodman, Ph.D.

Learning From Witnessing of the Holocaust: From Dead Spaces to the Living Mind

Marilyn B. Meyers, Ph.D.

Witnessing the Psychology of Terror: The Wansee Conference and the
“Final Solution to the Jewish Question”

Dori Laub, M.D.

Witnessing the Unwitnessed Event: From Silence to Narrative

Arlene Kramer Richards, Ed.D., *chair and discussant*

SATURDAY APRIL 27

SATURDAY APRIL 27

3:00-4:50 PM

Arlington Room

Panel

**SA-14 Psychodynamic Clinical Training Endangered?
A Roundtable Conversation**

Jessie Fontanella, Ph.D.

Kimberlyn Leary, Ph.D.

Claiming a Place at the Table: Psychodynamic Clinicians, Medical Homes, and Integrated Care

Lewis Aron, Ph.D.

New Frontiers in Psychoanalytic Education

David Downing, Ph.D., ABPP

On Preserving Psychoanalytical Diversity While Diversifying Psychoanalysis in the Academy

Jed Yalof, Psy.D., ABPP

Compromise Formation: Integrating Psychoanalytic Ideas into a Graduate Curriculum

Jeb Fowler, Ph.D.

Finding our Differences to Preserve Pluralism: Training within the Diverse Canon of Psychoanalysis

Marilyn Charles, Ph.D., ABPP, chair and moderator

3:00-4:50 PM

Berkeley Room

Panel

**SA-15 Breaking and Entering: How a Longterm Writing Group
Expands the Boundaries of Clinical Writing and Experiencing**

Annabella Bushra, Ph.D.

Elizabeth Goren, Ph.D.

Anita R. Herron, Ph.D.

Linda Luz-Alterman, Ph.D.

Carole Maso

Therese Ragen, Ph.D.

Jill Salberg, Ph.D.

Melanie Suchet, Ph.D.

Alexandra Woods, Ph.D.

Annabella Bushra, Ph.D., moderator

Anita R. Herron, Ph.D., chair

3:00-4:50 PM

Plaza Ballroom

Steering Committee Invited Panel

SA-16 Racism and Othering

David Eng, Ph.D.

Psychic Nowhere: Parachute Children, False Self, and the Politics of Attachment

Jessica Benjamin, Ph.D.

The Discarded and the Dignified: Where Are the Eyes of the Witnessing World?

Michelle Contreras, Psy.D.

Othering, Power and Coercion in Cases of Human Trafficking: Dialectics and Clinical Relevance

Usha Tummala-Narra, Ph.D., discussant

3:00-4:50 PM

Statler Room

Panel

**SA-17 Psychoanalysis and the Humanities: Music, Poetry and
Philosophy**

Spyros D. Orfanos, Ph.D., ABPP

Neruda's Despair

Frank L. Summers, Ph.D., ABPP

The Romantic Movement, Heidegger, and the Therapeutic Action of Psychoanalysis

Gazmend Kapllani, Ph.D., discussant

Nancy McWilliams, Ph.D., ABPP, chair

3:00-5:00 PM

Cambridge Room

Section IX Board Meeting

SATURDAY APRIL 27

4:00–4:50 PM

Clarendon Room

Meet The Authors

Healing in the Wake of Parental Loss: Clinical Applications and Therapeutic Strategies

Phyllis Cohen, Ph.D.
K. Mark Sossin, Ph.D.
Richard Ruth, Ph.D.

4:00–4:45 PM

Hancock Room

Section I Board Meeting

4:00–6:00 PM

Stuart Room

Committee on Multicultural Concerns Board Meeting

5:00–6:00 PM

Presidential Suite

**Informal Conversation with
President Frank L. Summers, Ph.D., ABPP**

6:00–8:00 PM

Berkeley Room

Section V Reception

6:30–8:30 PM

Georgian Room

Reception and Award Presentations

**Committee on Multicultural Concerns, Committee on
Sexualities and Gender Identities, Sections II, III and IX**



**SUNDAY
APRIL 28**

8:00–9:45 AM

Fairfield Room

Program Committee Meeting

8:00–9:50 AM

Clarendon Room

Ethics Committee Invited Panel

SU-1 Ethics and the Internship Application Process

Lisa Samstag, Ph.D.

Clinical Writing by Graduate Students: Ethical Dilemmas and Recommendations

Katie Lewis, M.A.

Show, Don't Tell: Clinical Materials and the Internship Application Process

Patricia Harney, Ph.D.

Ethical Challenges in Presenting Case Material for Graduate Students;
Professional Advancement: An Internship Director's Perspective

Alessandro Piselli, M.S.

The Dilemmas of "Fitting" as an Open-Minded Internship Applicant

Jane G. Tillman, Ph.D., ABPP, chair

SUNDAY APRIL 28

8:00-9:50 AM

Statler Room

Section III Invited Panel

SU-2 Global and Intrapsychic Aspects of the Nanny Experience

Susan Scheftel, Ph.D.

Why Aren't We Curious About Nannies?

Richard Reichbart, Ph.D.

Searching Without Knowing: A Personal Account of the Trauma of Nanny Loss

Carlotta G. Miles, M.D.

Black Nanny/White Infant Syndrome: Recognizing the Impact of Cross-Race Identification in the Psychoanalytic Process

JoAnn Ponder, Ph.D., discussant

8:00-9:50 AM

Hancock Room

Section VI Invited Panel

SU-3 Answering Important Clinical Questions through Research with New Methods

Sherwood Waldron, M.D.

Assessing the Relational Factor in Psychoanalysis

Francesco Gazzillo, Ph.D.

Same Analyst, Similar Patients, Different Outcomes: Why?

Karl Stukenberg, Ph.D., discussant

9:00-10:50 AM

Georgian Room

Steering Committee Invited Panel

SU-4 Psychoanalysis: A Look Into the Future

Jack Drescher, M.D.

Can the Psychoanalysis of the Future Bring Anything to Sex and Gender Studies?

Spyros Orfanos, Ph.D., ABPP

Waiting for the Barbarians

Dolan W. Power, Ph.D.

A Bionian/Kleinian Perspective: Learning from Experience and Dreaming the Future

Stuart Pizer, Ph.D., ABPP, chair

SUNDAY APRIL 28

9:00-10:50 AM

Arlington Room

Graduate Student Committee Invited Panel OPEN TO ALL

SU-5 Finding Our Way: The Widening Scope of Psychodynamic Clinical Training

Melissa Heinemann, M.A.

Psychodynamic Supervision Within a Multiracial Treatment: A Graduate Student's Experience of Racial Differences in Treatment and Supervision

Jason Moehringer, M.Psy.

When Supervision Isn't Enough: How the Widening Scope Challenges and Supports the Graduate Training Clinician

Naomi Azar, M.A.

Multiple Self-States; A Case Study of Treatment with a Civil War Refugee

Marilyn Charles, Ph.D., ABPP, chair and moderator

9:00-10:50 AM

Berkeley Room

Panel

SU-6 Exploring New Frontiers in Psychoanalysis

Amy E. Taylor, Ph.D.

The Body as a Psychoanalytic Frontier

Kristen Hennessy, Ph.D.

Emerging Voices: Lacan in Kenya

Julie Futrell, M.A., M.ED.

Transcending the Imaginary: Lacan in the American Clinic

Mark Kroll-Fratoni, M.A.

Lacan Speaks Deutsch: Lacanian Psychoanalysis in Germany

10:00 AM-NOON

Cambridge Room

Section VIII Board Meeting



**VISIT
BOSTON!**



PRESENTERS

Daphny Ainslie, Ph.D. Private Practice, Austin, TX	46, 56
Ricardo Ainslie, Ph.D., ABPP University of Texas-Austin, Austin, TX	56
Judith Alpert, Ph.D. NYU Postdoctoral Program in Psychotherapy and Psychoanalysis, New York, NY	38, 44
Neil Altman, Ph.D. Independent Practice, New, York, NY	56
Lewis Aron, Ph.D. NYU Postdoctoral Program in Psychotherapy and Psychoanalysis, New York, NY	50,59, 62
Sheri P. Ashcraft, Psy.D. Florida Psychoanalytic Institute, Coral Gables, FL	60
Noa Ashman, M.S.W., LC.S.W.-C Washington School of Psychiatry, (CPPP), Washington, DC	43
Galit Atlas, Ph.D. NYU Postdoctoral Program in Psychotherapy and Psychoanalysis, New York, NY	34
Steven D. Axelrod, Ph.D. Boswell Group, New York, NY	30
Naomi Azar, M.A. Long Island University, Brooklyn, NY	67
Carl Bagnini, M.S.W., LC.S.W., BCD The International Psychotherapy Institute, Washington, DC	43
Ankhesemun Ball, Ph.D. Westcoast Children's Clinic, Oakland, CA	46
Kenneth Barish, Ph.D. Westchester Center, Rye, NY	39

Donna Bassin, Ph.D. Institute for Psychoanalytic Training and Research, New York, NY	60	Stephanie Brody, Psy.D. Harvard Medical School, Boston, MA	35
Jordan Bate, M.A. New School for Social Research, New York, NY	38	Phillip Bromberg, Ph.D. William Alanson White Institute, New York, NY	60
John Beebe, M.D., C.G. Jung Institute of San Francisco, San Francisco, CA	50	Brian Brown, Psy.D. University of Chicago, Chicago, IL	51, 57
Stephen Behnke, J.D., Ph.D. Harvard Divinity School, Cambridge, MA	35	Larry Brown, Ph.D. Boston Psychoanalytic Institute and Society, Newton Centre, MA	51
Barri Belnap, M.D. The Austen Riggs Center, Stockbridge, MA	32	Sandra Buechler, Ph.D. William Alanson White Institute, New York, NY	46
Julia Beltsiou, Ph.D. NYU Postdoctoral Program in Psychotherapy and Psychoanalysis, New York, NY	57	Annabella Bushra, Ph.D. NYU Postdoctoral Program in Psychotherapy and Psychoanalysis, New York, NY	62
Jessica Benjamin, Ph.D. NYU Postdoctoral Program in Psychotherapy and Psychoanalysis, New York, NY	34, 57, 63	Jason Butler, M.A. Access Institute for Psychological Services, San Francisco, CA	57
Kori Bennett, M.A. University of Indianapolis, Indianapolis, IN	45	Dana L. Castellano, Psy.D. Boulder Institute for Psychotherapy and Research, Boulder, CO	30
Emily Boshkoff Johnson, M.A. University of Indianapolis, Indianapolis, IN	45	Andrea Celenza, Ph.D. Boston Psychoanalytic Society and Institute, Boston, MA	47
Susan Bers, Ph.D. Yale School of Medicine, New Haven, CT	38	Marilyn Charles, Ph.D., ABPP Austen Riggs Center, Stockbridge, MA	30, 32, 40, 47, 62, 67
Mark J. Blechner, Ph.D. William Alanson White Institute, New York, NY	35	J.P. Chevront, Jr., Psy.D. Institute for the Psychoanalytic Study of Subjectivity, New York, NY	34, 51
Therese Borges, B.A. Auburn University, Auburn, AL	44	Umi Chong, Psy.D. Danielsen Institute & Harvard Medical School, Boston, MA	35
Ghislaine Boulanger, Ph.D. NYU Postdoctoral Program in Psychotherapy and Psychoanalysis, New York, NY	31	Milena Claudius, M.A. Boston College, Chestnut Hill, MA	56
William Braun, Psy.D. New York Psychoanalytic Institute, New York, NY	31	Phyllis Cohen, Ph.D. NYIPT, Brooklyn, NY	64
		Michelle Contreras, Psy.D. Harvard Medical School/Cambridge Health Alliance, Cambridge, MA	63

Steven Cooper, Ph.D. Boston Psychoanalytic Society and Institute, Boston, MA	51	Darlene B. Ehrenberg, Ph.D., ABPP William Alanson White Institute, New York, NY	46
Leilani S. Crane, Psy.D. University of Pennsylvania, Philadelphia, PA	34, 59	Dianne Elise, Ph.D. Psychoanalytic Institute of Northern California (PINC), Oakland, CA	38, 45
Jack Danielian, Ph.D. American Institute for Psychoanalysis, New York, NY	39	David Eng, Ph.D. University of Pennsylvania, Philadelphia, PA	63
Jaine L. Darwin, Psy.D., ABPP Massachusetts Institute for Psychoanalysis, Cambridge, MA	47, 51	Todd Essig, Ph.D. William Alanson White Institute, New York, NY	48
Jody Davies, Ph.D. NYU Postdoctoral Program in Psychotherapy and Psychoanalysis, New York, NY	45	Jack Foehl, Ph.D. Boston Psychoanalytic Society and Institute, Boston, MA	45, 47
Dennis Debiak, Ph.D. Institute for Relational Psychoanalysis of Philadelphia, Swarthmore, PA	55	Motoni Fong-Hodges, Ph.D. William Alanson White Institute, New York, NY	37
Victoria C. Demos, Ph.D. ICP, National Institute for the Psychotherapies, New York, NY	57	Jessie Fontanella, Ph.D. Cambridge Health Alliance, Cambridge, MA	62
Diana Diamond, Ph.D. City University of New York, New York, NY	30	Jeb Fowler, Ph.D. Austen Riggs Center, Stockbridge, MA	32, 62
Leanne Domash, Ph.D. NYU Postdoctoral Program in Psychotherapy and Psychoanalysis, New York, NY	36	Miriam Frankel, Ph.D. Harvard Medical School, Cambridge, MA	45
Michael Donnell, Psy.D. Mills College, Oakland, CA	51	M. Gerard Fromm, Ph.D. Austen Riggs Center, Stockbridge, MA	39
David L. Downing, Psy.D., ABPP University of Indianapolis, IN	45, 49, 62	Helen Fronshtein, Ph.D. William Alanson White Institute, New York, NY	37
Jack Drescher, M.D. New York Medical College, Valhalla, NY	66	Sophia Frydman, M.F.A. Adelphi University, Brooklyn, NY	33
Jennifer Durham-Fowler Ph.D. Austen Riggs Center, Stockbridge, MA	32, 49	Julie Futrell, M.A., M.Ed. Duquesne University, Pittsburgh, PA	67
Jonathan Eger, Psy.D. NYU Postdoctoral Program in Psychotherapy and Psychoanalysis, New York, NY	30, 32	Daniel J. Gaztambide, PsyM Rutgers University, Piscataway, NJ	46
		Francesco Gazzillo, Ph.D. Sapienza University, Rome, Italy	59, 66

Jill Gentile, Ph.D. NYU Postdoctoral Program in Psychotherapy and Psychoanalysis, New York, NY	36	Michael A. Grodin, M.D. Elie Wiesel Center for Judaic Studies/Boston University, Boston, MA	57
Mark Gerald, Ph.D. NYU Postdoctoral Program in Psychotherapy and Psychoanalysis, New York, NY	36	Susan Gutwill, M.S., C.S.W., CGP Women's Therapy Center Institute, New York, NY	60
Mary-Joan Gerson, Ph.D. NYU Postdoctoral Program in Psychotherapy and Psychoanalysis, New York, NY	31, 40, 61	Griffin Hansbury, M.S.W. National Psychological Association for Psychoanalysis, New York, NY	35
Patricia Gherovici, Ph.D. Philadelphia Lacan Study Group, Philadelphia, PA	35	Lynne E. Harkless, Ph.D. Florida Psychoanalytic Institute, Coral Gables, FL	38, 60
Patricia Gianotti, Psy.D. Private Practice, North Hampton, NH	39	Andrew Harlem, Ph.D. California Institute of Integral Studies, San Francisco, CA	47
Shelly Goldklank, Ph.D. FGSP Yeshiva University, New York, NY	43	Patricia Harney, Ph.D. Harvard Medical School/Cambridge Health Alliance, Cambridge, MA	48, 65
Nancy Goodman, Ph.D. New York Freudian Society, Washington, D.C.	61	Adrienne Harris, Ph.D. NYU Postdoctoral Program in Psychotherapy and Psychoanalysis, New York, NY	39, 47, 50, 60
Robert M. Gordon, Ph.D. Private Practice, Allentown, PA	59	Anton H. Hart, Ph.D. William Alanson White Institute, New York, NY	37
Elizabeth Goren, Ph.D. NYU Postdoctoral Program in Psychotherapy and Psychoanalysis, New York, NY	44, 62	Stephen Hartman, Ph.D. Psychoanalytic Institute of Northern California, San Francisco, CA	51, 56, 60
William Gottdiener, Ph.D. John Jay College of Criminal Justice, New York, NY	45	Jill Hartog, M.S.W., L.C.S.W. Florida Psychoanalytic Society, Coral Gables, FL	60
Ethan Graham, Ph.D. William Alanson White Institute, New York, NY	32	Jane Hassinger, M.S.W., D.C.S.W. University of Michigan, Ann Arbor, MI	48
Sue Grand, Ph.D. NYU Postdoctoral Program in Psychotherapy and Psychoanalysis, New York, NY	38, 47, 59	Melissa Heinemann, M.A. Argosy University, Chicago, IL	67
Jessica Greenberg, M.Psy. George Washington University, Washington, DC	36	Kristen Hennessy, Ph.D. Swisher Behavioral Health Services, Inc, Huntingdon, PA	67
		Judith Lewis Herman, M.D. Harvard Medical School/Cambridge Health Alliance, Boston, MA	29

Anita R. Herron, Ph.D. NYU Postdoctoral Program in Psychotherapy and Psychoanalysis, New York, NY	62	Devon King, Ph.D. George Washington University, Washington, DC	30
Nancy Caro Hollander, Ph.D. Los Angeles Institute and Society for Psychoanalytic Studies, Los Angeles, CA	34, 44, 56	Susan Klebanoff, Ph.D. National Institute for the Psychotherapies, New York, NY	57
Amy Hollywood, Ph.D. Harvard Divinity School, Cambridge, MA	35	Michael C. Klein, Ph.D. New York University, New York, NY	36
Hazel Ipp, Ph.D. Toronto Institute for Contemporary Psychoanalysis, Toronto, Canada	59	Arlene Kramer Richards, Ed.D. New York Freudian Society, New York, NY	61
Marilyn Jacobs, Ph.D., ABPP The Institute of Contemporary Psychoanalysis, Los Angeles, CA	31, 57	Sharon Krikorian, Ph.D. Austen Riggs Center, Stockbridge, MA	32
Elliot Jurist, Ph.D., Ph.D. City University of New York, New York, NY	29	Mark Kroll-Fratoni, M.A. Cornerstone Behavioral Health, Evanston, WY	67
Abigail Judge, Ph.D. Harvard Medical School/Cambridge Health Alliance, Cambridge, MA	48	Steven Kuchuck, L.C.S.W. National Institute for the Psychotherapies, New York, NY	34
Gazmend Kapilani, Ph.D. Harvard University, Cambridge, MA	63	Jane Kupersmidt, Ph.D. National Psychological Association for Psychoanalysis, New York, NY	48
Adam Kaplan, Ph.D. Institute for the Psychoanalytic Study of Subjectivity, New York, NY	34	Jay S. Kwawer, Ph.D. William Alanson White Institute, New York, NY	37
Cassie R. Kaufmann, M.A. Adelphi University, Garden City, NY	33	Loong Kwok, Psy.D. Richmond Area Multi-Services, Inc., San Francisco, CA	51
Susan Kavalier-Adler, Ph.D., ABPP, D. Litt Object Relations Institute for Psychotherapy and Psychoanalysis, New York, NY	33	Dori Laub, M.D. Yale School of Medicine, New Haven, CT	61
Shamaila Khan, Ph.D. Boston Medical Center, Boston University, Boston, MA	46, 60	Frank Lawatsch The George Washington University, Washington, DC	38
Lama Khouri, L.M.S.W., M.S.C. William Alanson White Institute, New York, NY	34	Lynne Layton, Ph.D. Massachusetts Institute for Psychoanalysis, Roslindale, MA	33, 60
Christine C. Kieffer, Ph.D., ABPP Chicago Institute for Psychoanalysis, Chicago, IL	55	Jonathan Lear, Ph.D. University of Chicago, Chicago, IL	35
		Kimberlyn Leary, Ph.D., ABPP Harvard Medical School, Cambridge Health Alliance, Cambridge, MA	48, 62

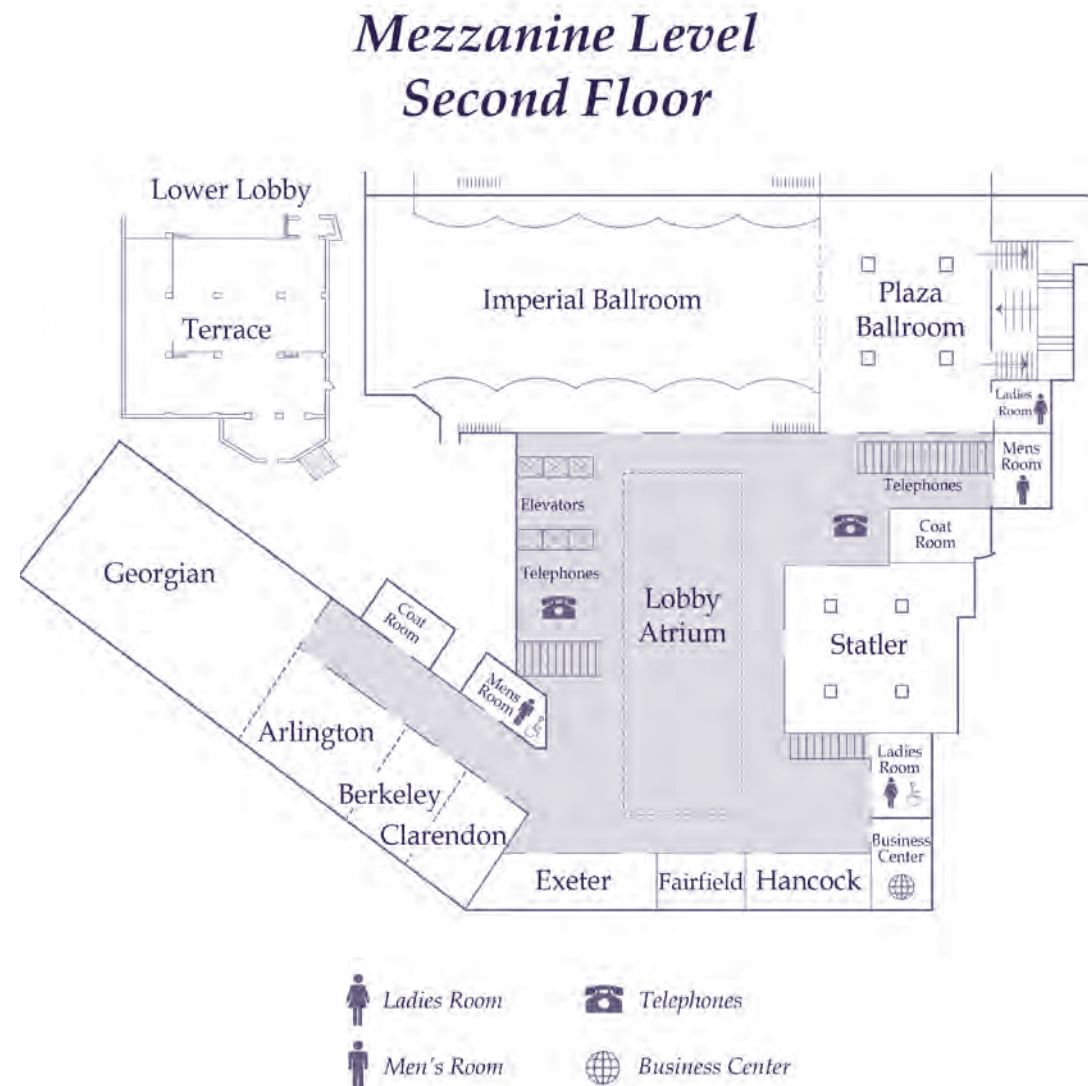
Jan Lerbinger, Ph.D. New England Conservatory of Music, Boston, MA	37	Max Malitzky, PsyM Institute for Psychoanalytic Training and Research, New York, NY	32
Katie Lewis, M.A. Long Island University, Brooklyn, NY	65	Johanna Malone, Ph.D. Massachusetts General Hospital & Harvard Medical School, Boston, MA	35, 37, 60
David Lichtenstein, Ph.D. Editor, Division Review, New York, NY	31	Carole Maso Brown University, Providence, RI	62
Vittorio Lingiardi, M.D. Sapienza University, Rome, Italy	59	Linda Mayes, M.D. Yale Child Study Center/Yale Medical School, New Haven, CT	38
Paul Lippmann, Ph.D. William Alanson White Institute, New York, NY	35	Marsha McCary, Ph.D. Private Practice, Austin, TX	47
Ruth Livingston, Ph.D. William Alanson White Institute, New York, NY	38	Jade McGleughlin, M.S.W. Massachusetts Institute for Psychoanalysis, Cambridge, MA	39
Judith Logue, Ph.D. Center for Psychoanalysis and Psychotherapy of New Jersey, Princeton, NJ	35	Nancy McWilliams, Ph.D., ABPP Graduate School of Applied & Professional Psychology at Rutgers, Flemington, NJ	59, 63
Riccardo Lombardi, M.D. Italian Psychoanalytic Society, Rome, Italy	58, 61	Almas Merchant, Ph.D. Derner Institute, Adelphi University, Brooklyn, NY	45, 49
Brenda Lovegrove Lepisto, Psy.D. Michigan State University/Hurley Medical Center, East Lansing, MI	30	Dan Merkur, Ph.D. Toronto Institute for Contemporary Psychoanalysis, Toronto, Canada	50
William D. Lubart, Ph.D. William Alanson White Institute, New York, NY	34	Marilyn Metzl, Ph.D., ABPP Kansas City Institute for Contemporary Psychoanalysis, Kansas City, MO	48
Stephen Lugar, Psy.D. Richmond Area Multi-Services, Inc., San Francisco, CA	51	Marilyn Meyers, Ph.D. Washington School of Psychiatry, Washington, DC	61
Linda Luz-Alterman, Ph.D. Harvard Medical School, Boston, MA	37, 62	Carlotta G. Miles, M.D. Private Practice, Washington, DC	66
William A. MacGillivray, Ph.D., ABPP University of Tennessee, Knoxville, TN	40	Jon Mills, Psy.D., Ph.D., ABPP Adler Graduate Professional School, Toronto, Canada	39, 50
Robert (Bart) Magee, Ph.D. Access Institute for Psychological Services, San Francisco, CA	30, 51, 57	Victoria Mills, LC.S.W. National Psychological Association for Psychoanalysis, New York, NY	44
Norka Malberg, Psy.D. Yale Child Study Center, New Haven, CT	29, 38	Jason Moehringer, M.Psy. George Washington University, Washington, DC	67

Knuth Mueller, Dipl. -Psych, Dipl. -Paed Berlin Institute for Psychotherapy and Psychoanalysis, Berlin, Germany	32	Kimberly Prince Korobov, M.A., M.Div. Columbus State University, Columbus, GA	44
Maureen Murphy, Ph.D. Psychoanalytic Institute of Northern California, San Francisco, CA	35	Scott D. Pytluk, Ph.D. Argosy University, Chicago, IL	51
Sanjay Nath, Ph.D. Widener University, Chester, PA	50	Therese Ragen, Ph.D. NYU Postdoctoral Program in Psychotherapy and Psychoanalysis, New York, NY	62
Monisha C. Nayar-Akhtar, Ph.D. Psychoanalytic Center of Philadelphia, Philadelphia, PA	55	Miki Rahmani, M.A. South Jerusalem Mental Health Center, Jerusalem, Israel	46
Joseph Newirth, Ph.D., ABPP Derner Institute, Adelphi University, Garden City, NY	33	David Ramirez, Ph.D., ABPP Swarthmore College, Swarthmore, PA	46, 47, 56
Maureen O'Reilly-Landry, Ph.D. Columbia University, New York, NY	39	Evelyn Rappoport, Psy.D. Private Practice, New York, NY	34
Spyros D. Orfanos, Ph.D., ABPP NYU Postdoctoral Program in Psychotherapy and Psychoanalysis, New York, NY	49, 63, 66	Kenneth Reich, Ed.D. Massachusetts Institute for Psychoanalysis, Boston, MA	57
Neha Patel, Psy.D. OPFS Community Mental Health Council, Chicago, IL	59	Richard Reichbart, Ph.D. Institute for Psychoanalytic Training and Research, New York, NY	66
Shelley Payne, Ph.D. Florida Psychoanalytic Society, Coral Gables, FL	60	Alan Roland, Ph.D. National Psychological Association for Psychoanalysis, New York, NY	33
Kristi Pikiewicz, Ph.D. Independent Practice, Boulder, CO	29	Dan Rose, Psy.D. Columbus State University, Columbus, GA	44
Alessandro Piselli, M.S. University of Massachusetts, Amherst, MA	65	Larry Rosenberg, Ph.D. Child Guidance Center of Southern Connecticut, Stamford, CT	31
Stuart Pizer, Ph.D., ABPP Massachusetts Institute for Psychoanalysis, Boston, MA	35, 66	Richard Ruth, Ph.D. George Washington University, Washington, DC	45, 64
JoAnn Ponder, Ph.D. Center for Psychoanalytic Studies, Austin, TX	66	Avgi Saketopoulou, Psy.D. NYU Postdoctoral Program in Psychotherapy and Psychoanalysis, New York, NY	38
Dolan W. Power, Ph.D. Massachusetts Institute for Psychoanalysis, Boston, MA	66	Jill Salberg, Ph.D. NYU Postdoctoral Program in Psychotherapy and Psychoanalysis, New York, NY	62
Robert Prince, Ph.D., ABPP NYU Postdoctoral Program in Psychotherapy and Psychoanalysis, New York, NY	31		

Lisa Samstag, Ph.D. Long Island University, Brooklyn, NY	65	Warren E. Spielberg, Ph.D. New School University, New York, NY	44, 61
Nicholas Samstag, Ph.D. William Alanson White Institute, New York, NY	37	Karen Starr, Psy.D. NYU Postdoctoral Program in Psychotherapy and Psychoanalysis, New York, NY	50
Shara Sand, Psy.D. LaGuardia Community College, CUNY, New York, NY	51	Miriam Steele, Ph.D. New School for Social Research, New York, NY	38
Cristiano Santostefano, M.A., M.Psy. George Washington University, Washington, DC	36	Arlene (Lu) Steinberg, Psy.D. Teachers College, Columbia University, New York, NY	47
Joan Sarnat, Ph.D. Psychoanalytic Institute of Northern California, San Francisco, CA	57	Jessica Stern, Ph.D. FXB Center for Human Rights, Harvard University, Cambridge, MA	57
Shelley Savage, Psy.D. West Virginia University, Morgantown, WV	34, 50, 59	Gregory Stevens, M.S. Auburn University, Auburn, AL	44, 57
Susan Scheftel, Ph.D. Columbia Psychoanalytic Center for Psychoanalytic Training and Research, New York, NY	66	Karl Stukenberg, Ph.D. Xavier University, Cincinnati, OH	66
Allan Schore, Ph.D. UCLA David Geffen School of Medicine, Los Angeles, CA	60	Melanie Suchet, Ph.D. Stephen Mitchell Center for Relational Studies, New York, NY	51, 62
Henry Seiden, Ph.D. Private Practice, New York, NY	36	Kate Roy Sullivan, Ph.D. Massachusetts Institute for Psychoanalysis, Boston, MA	33
Jonathan H. Slavin, Ph.D., ABPP Harvard Medical School at Cambridge Health Alliance, Cambridge, MA	46	Frank L. Summers, Ph.D., ABPP Northwestern University, Chicago, IL	40, 49, 50
Malcolm Slavin, Ph.D. Massachusetts Institute for Psychoanalysis, Boston, MA	36, 59	Amy E. Taylor, Ph.D. Austen Riggs Center, Stockbridge, MA	67
Stephen Soldz, Ph.D. Boston Graduate School of Psychoanalysis, Boston, MA	60	Nina K. Thomas, Ph.D., ABPP NYU Postdoctoral Program in Psychotherapy and Psychoanalysis, New York, NY	51, 56
Stephen Solow, Ph.D. NYU Postdoctoral Program in Psychotherapy and Psychoanalysis, New York, NY	32	Jane Tillman, Ph.D., ABPP Austen Riggs Center, Stockbridge, MA	65
K. Mark Sossin, Ph.D. Pace University, New York, NY	64	Amy Torchia, M.A. The Wright Institute, Berkeley, CA	36

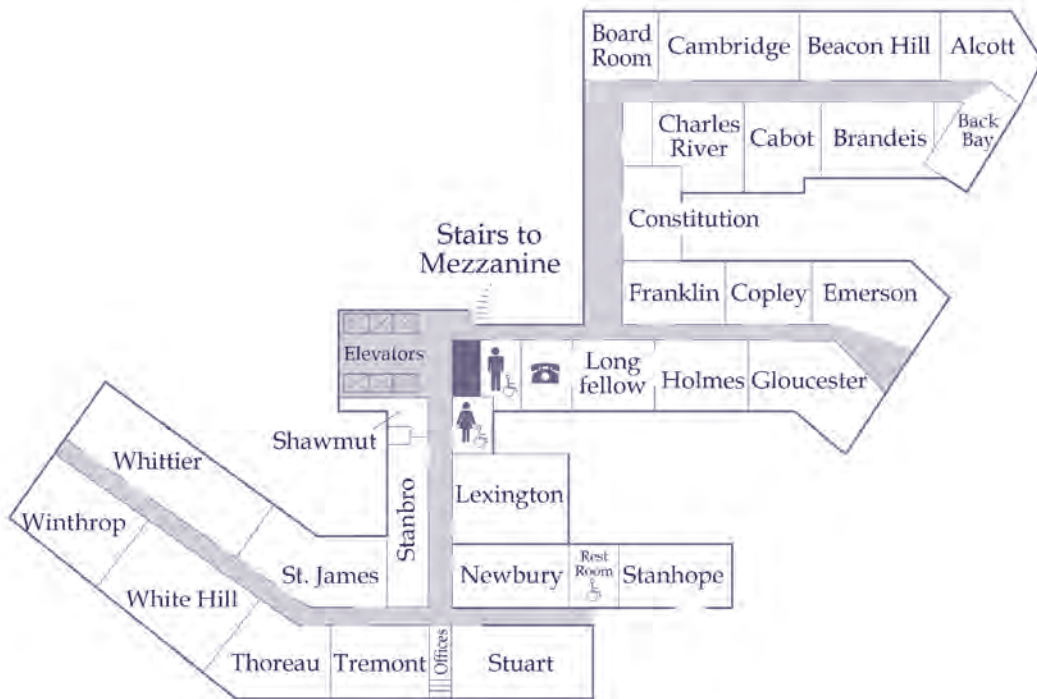
Ellen K. Toronto, Ph.D. Private Practice, Ann Arbor, MI	48
Steven Tuber, Ph.D. City University of New York at City College, New York, NY	39
Jane Tucker, Ph.D. NYU Postdoctoral Program in Psychotherapy and Psychoanalysis, New York, NY	48
Usha Tummala-Narra, Ph.D., M.A. Boston College, Chestnut Hill, MA	55, 58, 63
Kirkland Vaughans, Ph.D. Adelphi University, Garden City, NY	61
Vamik Volkan, M.D. University of Virginia, Charlottesville, VA	33
Paul Wachtel, Ph.D. City University of New York, New York, NY	40
Aleksandra Wagner, Ph.D. National Psychological Association for Psychoanalysis, New York, NY	48
Sherwood Waldron, M.D. Mt. Sinai School of Medicine, New York, NY	66
Ben Weiss, M.S.W. North Charles Mental Health, Somerville, MA	37
Drew Westen, Ph.D. Emory University, Atlanta, GA	30, 50, 52
Cleonie White, Ph.D. William Alanson White Institute, New York, NY	37
Alexandra Woods, Ph.D. Independent Practice, New York, NY	62
Jed Yalof, Psy.D. Immaculata University, Immaculata, PA	62
Kris Yi, Ph.D. Institute of Contemporary Psychoanalysis, Los Angeles, CA	45, 50, 61

HOTEL FLOOR PLANS



HOTEL FLOOR PLANS

*Conference Rooms
Fourth Floor*



Men's Room Ladies Room Telephones

NAME (As you wish it to appear on your badge) _____ DEGREE _____

ADDRESS _____

CITY, STATE, ZIP, COUNTRY _____

PHONE _____ FAX _____

EMAIL _____

Date highest professional degree was received ____/____/____ (mm/yyyy)

First time attending Division 39 Spring Meeting? Yes No

Will you request CE credits for programs you attend? Yes No

Are you a member of APA? Yes No

Please indicate any accessible accommodations _____

REGISTRATION FEES (Circle the appropriate dollar amount.)

ALL STUDENTS AND INSTITUTE CANDIDATES MUST submit proof of their status with registration. Without this proof, your registration will not be processed. See the **Registration** section in this brochure for specific proof required. **EARLY BIRD REGISTRATION ENDS JANUARY 11, 2013**

	Postmarked or electronically submitted by 1/11/13	4/16/13
Member	\$325	\$375
Non-Member	\$375	\$425
Student Member	\$ 60	\$ 70
Student Non-Member*	\$ 85	\$ 95
ECP Member (Date of Advanced Degree April 2006 or later)	\$125	\$150
ECP Non-Member (Date of Advanced Degree April 2006 or later)**	\$165	\$180
Institute Candidate member (Enrolled in first 5 yrs of curriculum only)	\$125	\$150
Institute Candidate Non-Member (Enrolled in first 5 yrs of curriculum only)***	\$195	\$210

*\$25 of all Student Non-Member registrations will be applied to a one-year Division 39 Membership

**Please use \$50 of my registration fee towards Division 39 Membership

***Please use \$95 of my registration fee towards Division 39 Membership

FOREIGN AFFILIATES

	Postmarked or electronically submitted by 1/11/13	4/16/13
CURRENT DIVISION 39 MEMBERS:		
Canada, Western Europe, Australia, New Zealand, Japan	\$280	\$320
Other Countries: South America, Africa, Asia, Middle East	\$140	\$180

NON-DIVISION 39 MEMBERS:

Canada, Western Europe, Australia, New Zealand, Japan***	\$305	\$345
Other Countries: South America, Africa, Asia, Middle East***	\$165	\$190

***Please use USD \$45 of my registration fee towards Division 39 membership

continued on reverse

REGISTRATION FORM

CONTINUING EDUCATION MASTER CLASSES *Please check the course(s) you wish to attend:*

All Day Session 9:00 am–1 pm; 2:00 pm–6 pm

- Intro to the Application of Mentalization Based Therapy \$140

Morning Sessions 9:00 am–12:15 pm

- Understanding and Treating Complex PTSD \$60
 Success in Publishing Workshop \$60

Afternoon Sessions

- Therapist's Guide to New Media, 1:00 pm–2:30 pm \$30
 Narcissistic Personality Disorder, 2:00 pm–5:15 pm \$60
 Marketing Yourself as an Analytic Practitioner, 3:00 pm–6:15 pm \$60

This workshop is free to Early Career Psychologists who are Division 39 Members

Note: Registrations postmarked after April 16, 2013 will be returned. DO NOT mail or fax registrations after that date. You can register onsite at the Boston Park Plaza Hotel beginning Wednesday, April 24. There will be an additional \$50 added to the above fee schedule for all onsite registrations.

APF DIVISION 39 FUND: I would like to make a tax deductible contribution of \$_____.

TOTAL PAYMENT DUE *(Registrations will not be processed unless accompanied by full payment.)* \$_____.

PAYMENT INFORMATION *(These are the only accepted methods of payment.)*

- Check made payable to Division 39, APA Visa Mastercard

--	--	--	--	--	--	--	--	--	--	--	--	--	--	--	--	--	--	--	--	--

CARD NUMBER

--	--	--	--	--	--

EXP. DATE (MM/YY)

NAME AS IT APPEARS ON THE CARD

BILLING ADDRESS IF DIFFERENT FROM ABOVE

CITY, STATE, ZIP CODE

RETURN REGISTRATION FORMS TO: Natalie Shear Associates, Conference Coordinators
1101 14th Street NW, Suite 1200, Washington, DC 20005. Fax forms to 202-446-2965.

FOR REGISTRATION QUESTIONS: 800-833-1354 x4 or 202 833-4456x4

FOR ALL OTHER QUESTIONS: Division39Boston@natalieshear.com or 800-833-1354x1

**DIVISION OF PSYCHOANALYSIS (39)
33RD ANNUAL SPRING MEETING**

c/o Natalie Shear Associates

1101 14th Street, NW, Suite 1200

Washington, DC 20005

BOUNDARIES •
GLOBAL
BORDERS • NEW FRONTIERS:
PSYCHOANALYSIS
in a Social World



APRIL 24-28, 2013 • BOSTON, MA